

BHP

City of Elliot Lake Council Meeting March 24, 2025



Disclaimer

Forward-looking statements

This presentation contains forward looking statements, which may include, without limitation, statements regarding (i) expectations, plans, strategies and objectives of management; (ii) anticipated operating modes and performance and timeframes for projects and other activities; (iii) identified risks and anticipated potential or actual impacts or outcomes; (iv) the potential effect of possible future events on risks, impacts or outcomes; (v) our commitments to sustainability reporting, frameworks, standards and initiatives; (vi) our commitments, timing and/or plans to achieve certain outcomes, targets or aspirations with respect to health, safety, environment and/or the communities in which we operate; (vii) our commitments, timing and/or plans to improve or maintain safe tailings storage management;; and (viii) regulatory developments and new or changed standards.

These forward-looking statements are not guarantees or predictions of future performance, and involve known and unknown risks, uncertainties and other factors, many of which are beyond our control, and which may cause actual results to differ materially from those expressed in the statements contained in this presentation. BHP does not undertake any obligation to update or review any forward-looking statements. Past performance cannot be relied on as a guide to future performance.

No offer of securities

Nothing in this presentation should be construed as either an offer to sell or a solicitation of an offer to buy or sell BHP securities in any jurisdiction or be treated or relied upon as a recommendation or advice by BHP.

Land acknowledgement



Agenda

- Company Overview
- Public Safety
- What do we do
 - Ongoing Operations and Projects
 - Environmental Monitoring
 - Regulatory Compliance
- Community Engagement and Social Investment
- Questions/Discussion



Our Values & Purposes	Our Purpose
<p>Do what's right A sustainable future starts with safety and integrity, building trust with those around us.</p> <p>Seek better ways Listening to learn and inspiring challenge is how we drive progress.</p> <p>Make a difference The accountability to act, create value and have impact is on each of us, every day.</p>	<p>Our BHP purpose is to bring people and resources together to build a better world</p> <p><i>Legacy Assets Canada Purpose: Protecting Today and Improving Tomorrow</i></p>

BHP

Legacy Assets

At BHP, we're committed to having a positive impact beyond the life of our operations.

BHP supplies essential materials for infrastructure, improving living standards and fostering greater prosperity. Our commitment to the areas where we operate doesn't end with mine closure.

Through careful planning and ongoing consultation, we're able to achieve successful reclamation of Legacy Assets. This includes taking measures to enhance the environment and supporting communities during the transition.

We're focused on leaving a positive legacy in the communities where we operate.

Canadian sites



Responsible mine reclamation and closure management

Legacy Assets is made up of 25 historic sites in Canada and the United States that were acquired largely through corporate mergers and acquisitions close to or after their closure.

The factors that lead to mine closures include depletion of mineral resources, changes in market demand, government regulations, economic and political landscape, and environmental factors.

These sites mainly produced copper, zinc, uranium, tin, and gold, and a majority ceased production decades ago.

BHP takes responsibility for rehabilitating and restoring these sites for future land use. Proper mine reclamation and closure management of Legacy Assets are crucial to minimizing the impact on local communities and the environment.

US sites



Key activities

At our legacy sites, we undertake a range of activities that seek to ensure that we operate in a safe, responsible, and sustainable manner. Some of the key activities we carry out include:

- Tailings and water management
- Risk mitigation and technical studies
- Closure and remediation projects
- General site care and maintenance





BHP

For more information,
visit www.bhp.com/planningclosure

6840 North Oracle Road, Suite 100,
Tucson, Arizona, USA, 85704
Phone: +1 (520) 719-4160

City of Elliot Lake

Going above and beyond

At our Legacy Assets sites, we recognize that responsible mine closure entails more than just fulfilling our legal requirements. It's about playing an active role in environmental and economic development in the local community. As a result, we undertake a range of voluntary activities, focused on:



Community

- Emergency response planning
- Donations to food banks
- Scholarships
- Youth and women centres
- Multi-social service NGOs
- Promoting community recreation



Environment

- Plant nurseries
- Fish hatcheries
- Walking and hiking trails
- Campgrounds



Indigenous Peoples

- Conducting heritage and cultural surveys
- Engaging with Indigenous organizations to align our Legacy Assets with their goals and values

Collaborative planning

BHP is fully committed to collaborating with government officials, community groups, Indigenous Peoples, environmental experts, emergency responders, and industry stakeholders to develop and implement effective strategies for managing our Legacy Assets sites.

Legacy Assets in focus



Island Copper,
British Columbia



Reclaimed mine site in
Selbaie and Poirier, Quebec



Restored habitat surrounding
Elliot Lake, Ontario



New Melones Reservoir from
the top of the former Carson
Hill Gold Mine, California



Former tailings pile for Miami
Unit Copper Mine, Arizona



Former Copper Cities
Copper Mine, Arizona

BHP

Our Team



City of Elliot Lake

Transition to Owner Operator Business Model

Maxime Morin – Site Superintendent

Wade Wiggins – Operations Lead

Jody Stefanich, Environmental Coordinator

Calvin Scott, Specialist Operations

Cynthia Choppe, Environmental Coordinator

Josh Bowerman, Specialist Operations

James Cameron, Maintenance Lead

Claude Marier, Maintenance Specialist

Steven Blanchette, Supervisor Project Execution

Paige Dunbar, Project Specialist

Branden Croskery, Principal Safety

George Downey, Principal Work Management

Supporting Remotely

Bryan Fetter, Manager Canada Legacy Assets (acting)

Ali McKean, Corporate Affairs

Jay Hartling, Principal Indigenous Engagement

Holly Heffner, Superintendent Licensing and Permitting

BHP

Quirke

1956-1961; 1968-1992

20.5 M tonnes; 183.5 ha

Spanish American

1958-1959

0.45 M tonnes; 12 ha

Milliken

1958-1964

0.8 M tonnes; 23.1 ha

Pronto

1958-1970

4.4 M tonnes; 44.7 ha

Panel

1958-1961; 1979-1990

16 M tonnes; 130.5 ha

Stanleigh

1958-1960; 1983-1996

20.5 M tonnes; 370 ha

Lacnor

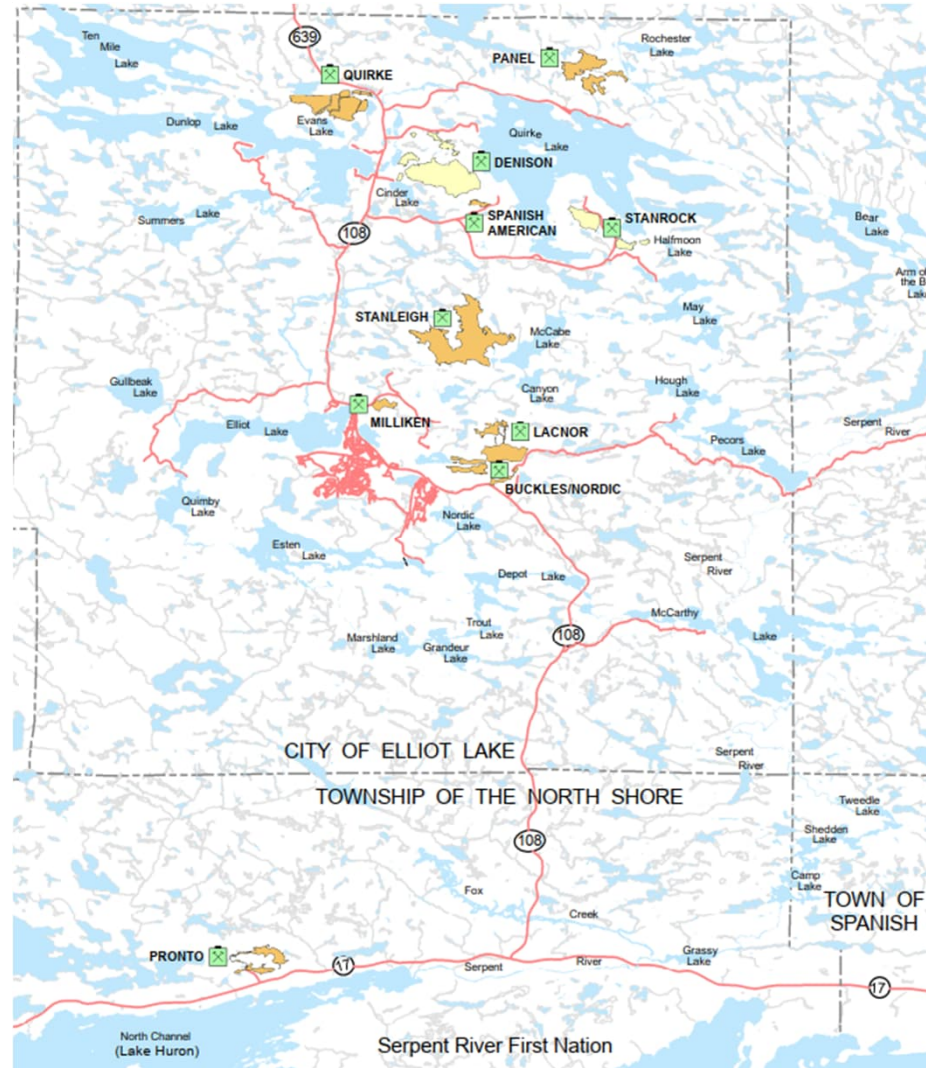
1957-1960

2.7 M tonnes; 31.5 ha

Buckles Nordic

1957-1968

12 M tonnes; 114.2 ha



City of Elliot Lake

BHP

Public Safety on BHP/RAL Property

- BHP is committed to ensuring the safety of our employees and the community.
- BHP sites are actively managed and maintained by our staff and contractors.
- Some hazards include surface mobile equipment including lime delivery trucks and road maintenance equipment, light duty vehicles and beaver trapping activities.
- Gates have been updated with new signs to make expectations clearer.



Public Access to RAL Sites

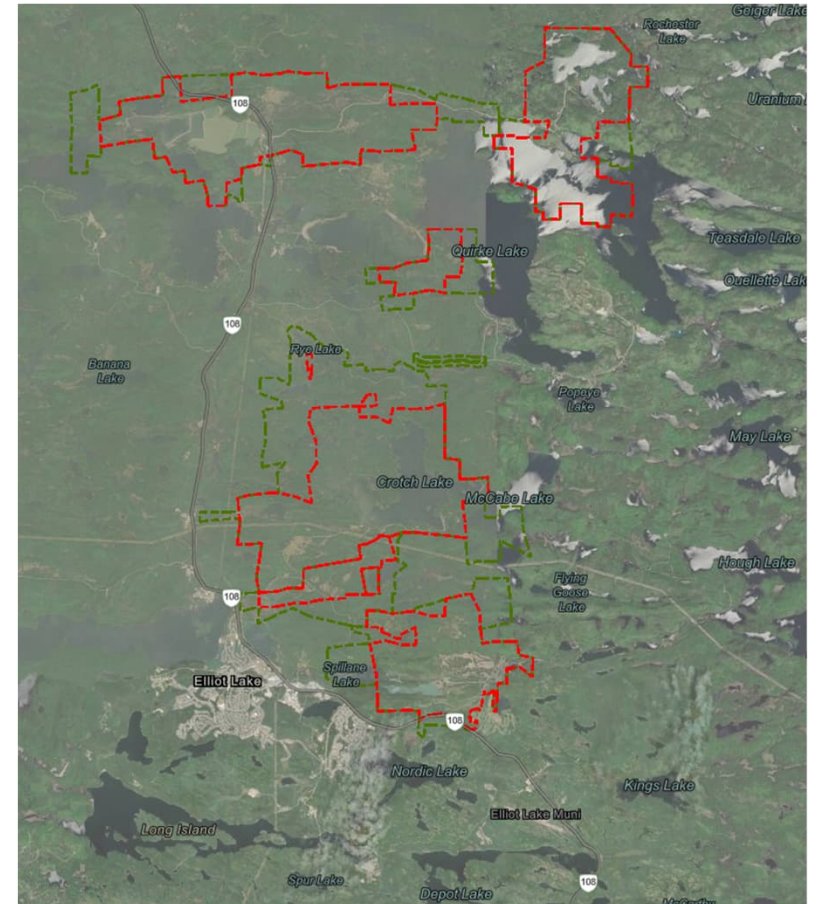
We are continually looking to provide additional alternative land use access to our sites. However, the main criteria is that we ensure that the sites are safe for the public.

Organizations with land use agreements in place:

- Quirke Lake Seniors Campground
- Cousins Garden Center
- RC Modelers Club
- Elliot Lake Snowbirds
- Blind River Sno Riders Snowmobile Club
- EL Rod and Gun Club
- Penokean Hills Field Naturalist
- City of Elliot Lake



City of Elliot Lake



Trails Systems on BHP Property

Public trail systems across BHP property:

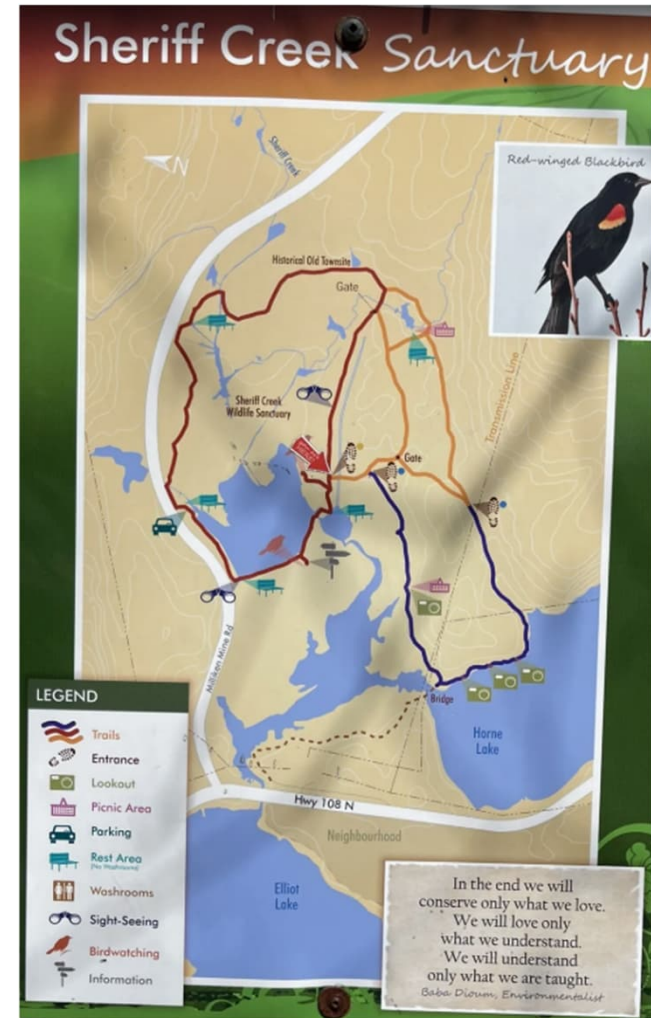
- BHP prohibits public vehicles including ATVs and snow machines
- Pedestrian traffic is allowed on public trails that cross BHP property
- Hiking activities are restricted to public trails (stay on the trails)
- Pets must be leashed while on BHP property as Beaver Management activities can pose a risk to dogs
- No parking in front of BHP site access gates



Sheriff Creek Sanctuary Trails

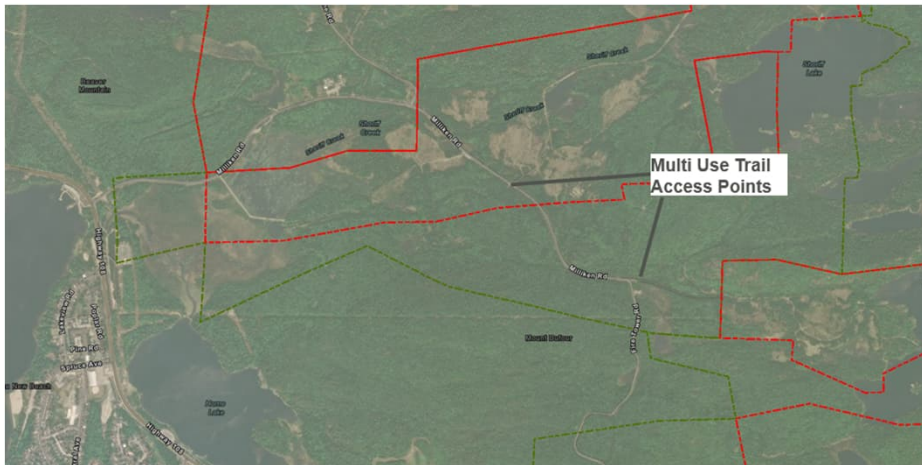
- The Sheriff Creek Sanctuary Red and Yellow Trails remain a Pedestrian path only.
- Please ensure these rules are followed as these trails are catered to walkers
- Fast moving bikers introduce a safety risk to those who are walking these narrow trails
- Make sure to read the bulletin board prior to entering the trails

City of Elliot Lake



Multi Use Trails

- Pedal Biking is permitted in multi-use trails located on the north side of Milliken Mine Road between Sherriff Lake and the Lacnor Reclaimed Mine Site
- Please do not park in front of these gates

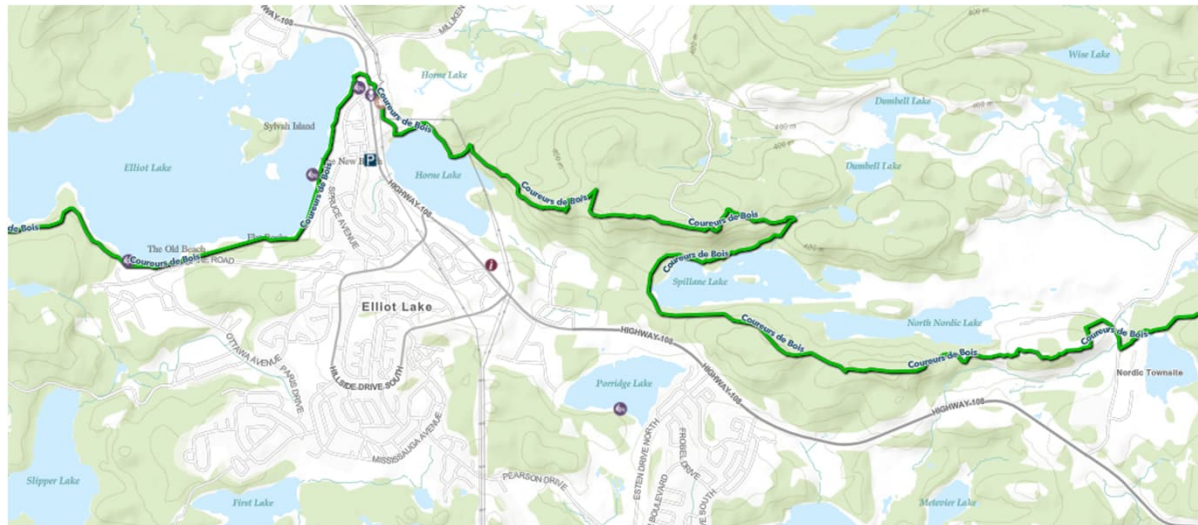


City of Elliot Lake



Trans Canada Trail

- The Trans Canada Trail System is adjacent to the southern edge of the Nordic Mine Site
- The trail is demarcated by yellow trail arrows
- Please note that the Nordic Site is closed to the public due to ongoing long-term care and maintenance activities including lime hauling



City of Elliot Lake

Ongoing Operations:

- Dam safety inspections
- Water treatment and management
- Road and infrastructure maintenance
- Environmental monitoring
- Routine maintenance



Projects

2024:

- **All Sites:** Road improvement works to improve access and safety.
- **Quirke:** Installation of a new power line and removal of the old line to align with current power needs and reduce operational costs for BHP and Hydro One.
- **Panel:** Replacement of the Main Basin stop-log structure slightly upstream of the existing structure to eliminate worker exposure to fall of ground risk.
- **Pronto:** Installation of a new pump station to alleviate concerns with the existing treatment plant intake design and increase operating range.
- **Lacnor/Nordic/Buckles:** Installation of one new weir and instrumentation of seven hydrometric stations to facilitate continuous water level and flow measurements and development of a site-wide water balance.

City of Elliot Lake



BHP

Projects

2025/2026

All Sites: Installation of hydrometric monitoring instrumentation at all final discharge locations to facilitate continuous water level monitoring and supplement in-field monitoring.

Nordic: Replacement of the existing Pond A pumping system to increase discharge capacity and maintain desired operating water levels within Pond A.

N-12 weir replacement (an extension of the Lacnor, Nordic, Buckles hydrometric stations project). The existing weir is at end-of-life and replacement will allow for more accurate flow data to be collected and will support the site-wide water balance.

Monitoring well installations to support environmental characterization.

Panel: Replacement of the Panel Mine Ventilation Raise cap as it is at end-of-life.

Quirke: Removal of the Quirke substation as it is at end-of-life.

Replacement of the Gravel Pit Lake Q-29 valves as they are difficult to operate and present an ergonomic risk to workers.

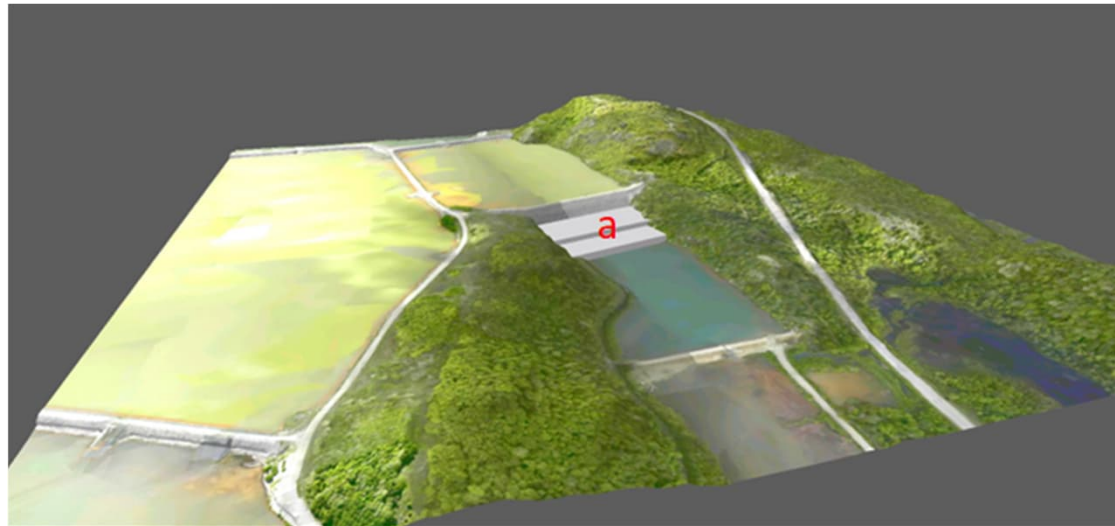
Replacement of the Quirke I Main Downcast cap as it is at end-of-life.



Quirke Main Dam Toe Berm Project Update

- Stability modelling has been completed to inform the final design of the toe berm.
- The final design will be a 100-meter-wide stepped toe berm configuration as depicted in the rendering below to be constructed in 2026.
- The toe berm will require 130,100 m³ of material resulting in approximately 21,000 truck loads to site.
- Material sourcing has begun with traffic management plans to follow post contract award.

Figure 1. Stepped toe berm design model (a) at Quirke Main Dam.

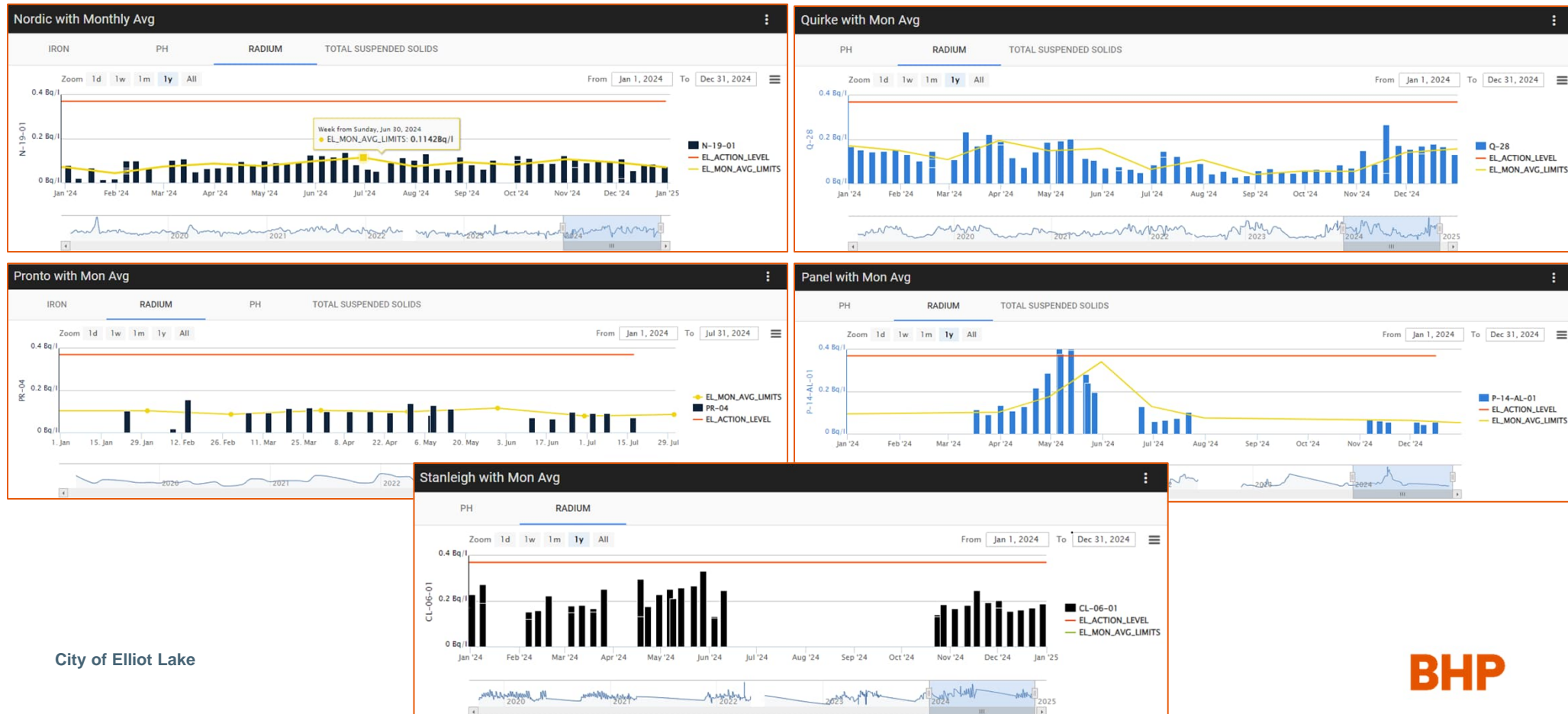


Environmental Monitoring Framework

- A monitoring framework was developed consisting of 3 programs, each with distinct objectives:
 - TMA Operational Monitoring Program (TOMP)
 - TMA performance
 - Source Area Monitoring Program (SAMP)Final release points
 - Serpent River Watershed Monitoring Program (SRWMP)
 - Receiving environment
- A central tenet of the monitoring programs is that they should have the ability to change over time in response to conditions.
- Currently in Year 1 of Cycle 6, next report will be completed in 2030.

Effluent Discharge Compliance

Effluent water quality met all discharge compliance limits in calendar year 2024. Graphs below show radium-226 concentrations compared to the monthly mean discharge limit of 0.37 Bq/l. Note that the grab sample limit is 1.1Bq/L.



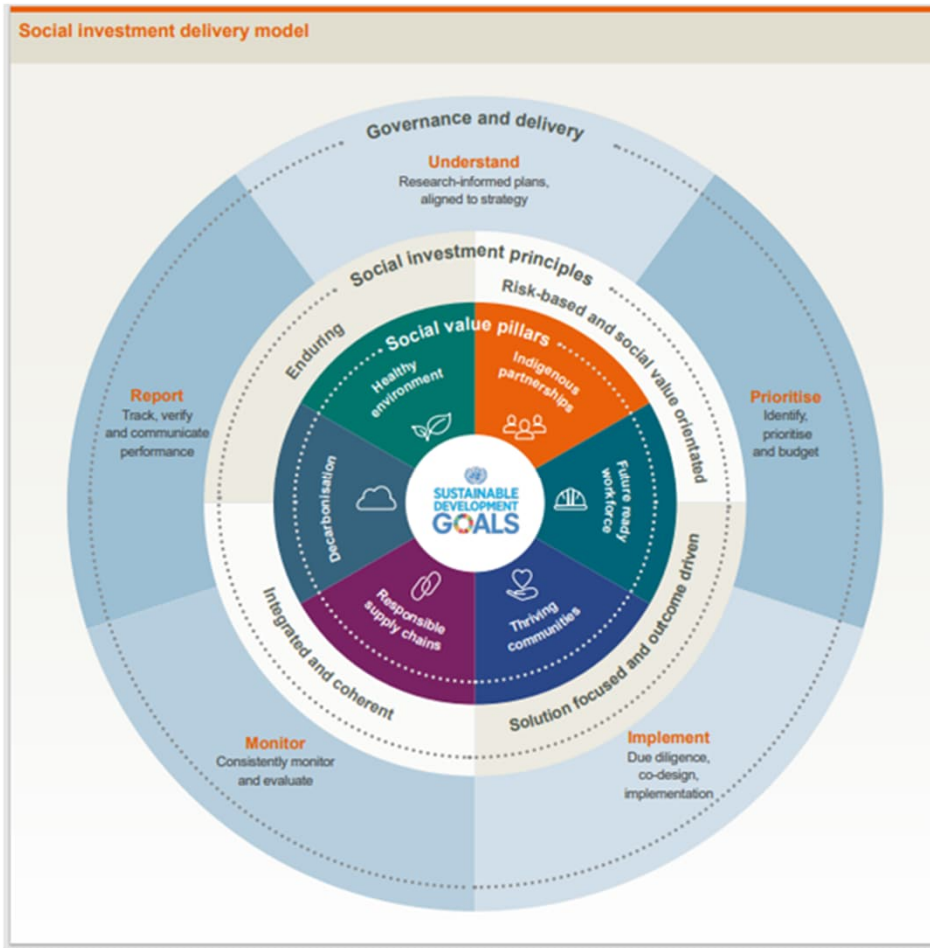
City of Elliot Lake

BHP

Community Engagement:

- Quirke Main Dam Buttress Community Engagement- (August 2024)
- BHP Annual Elliot Lake Newsletter (February 2025)
- Annual information meetings with municipalities, Indigenous groups, non-government organizations
- Land access agreements: plant nursery, model plane flying club, seniors camping park, fish hatchery, snowmobile club
- Corporate Affairs Contact: alexandria.mckean@bhp.com

Social Investment:



City of Elliot Lake

Community Donations

- City of Elliot Lake Hockey Arena
- Mississagi Provincial Park
- Elliot Lake Women's Group
- Grace Community Church
- Elliot Lake Palliative Care
- Spanish Public Library
- City of Elliot Lake Heritage Days
- Empty Arms-Families Suffering from Prenatal Loss
- Easter Seals Ontario
- ARIEL Community Art
- Central Public School Nutrition Program
- Town of Spanish Community Christmas Food Program
- Elliot Lake Retirement Living Youth Golf Program

Uranium Heritage Days

On June 27th, 2024 – in collaboration with the Elliot Lake Museum, BHP hosted a community site tour of the Quirke decommissioned mine site and tailings management areas.

This year we plan to visit another decommissioned site and look forward to hosting another successful tour.



Santa Clause Parade

On November 29th, 2024 – BHP participated in the Elliot Lake Santa Clause Parade. Appropriately themed “Christmas in Hockeyville”; the team handed out BHP Hockey Pucks and Toques.



Emergency Response Drill

May 2025 - Simulated Emergency Exercise in collaboration with the city of Elliot Lake

Although the likelihood of a dam failure is extremely low, BHP's goal is to ensure that the response to such an event would be effective and appropriate.



BHP