

A New **ARTS AND CULTURE CENTRE** for the  
*City of Elliot Lake*

*June 25, 2021*

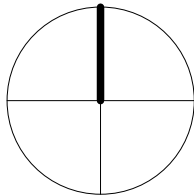




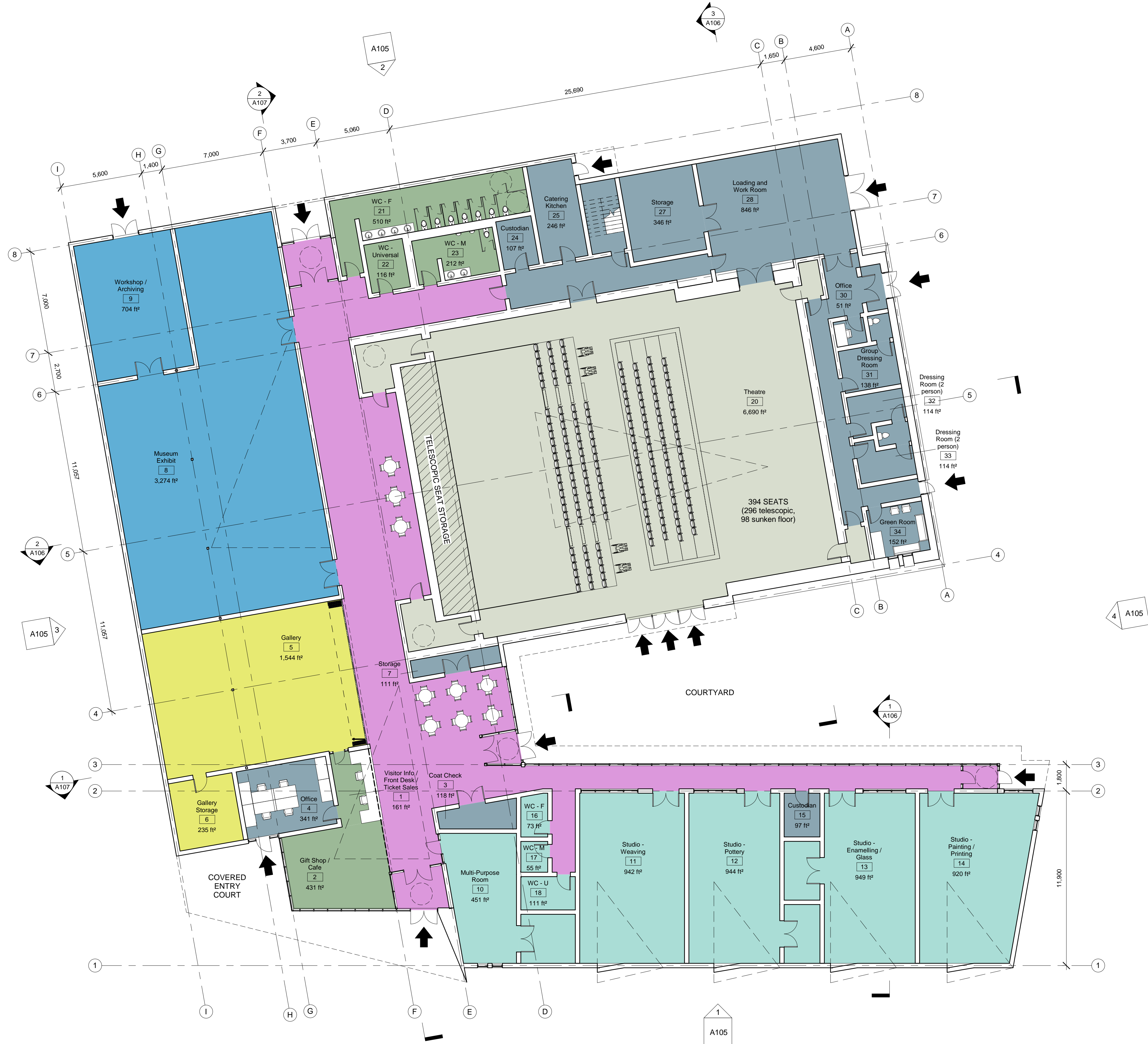
Parking Statistics	
General	179
Accessible	10
Total	189

Legend	
<span style="color: red;">---</span>	Property Line
<span style="color: blue;">---</span>	Out of Scope







Department Legend

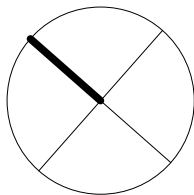
- Public
- Theatre
- Gallery
- Museum
- Studios
- Circulation
- Back-of-House

#	Department	Name	Level	Area (sf)	Area (sm)
1	Public	Visitor Info / Front Desk / Ticket Sales	Level 1	161 ft²	14.94 m²
2	Public	Gift Shop / Cafe	Level 1	431 ft²	40.01 m²
3	Back-of-House	Coat Check	Level 1	118 ft²	10.96 m²
4	Back-of-House	Office	Level 1	341 ft²	31.72 m²
5	Gallery	Gallery	Level 1	1,544 ft²	143.46 m²
6	Gallery	Gallery Storage	Level 1	235 ft²	21.85 m²
7	Back-of-House	Storage	Level 1	111 ft²	10.35 m²
8	Museum	Museum Exhibit	Level 1	3,274 ft²	304.15 m²
9	Museum	Workshop / Archiving	Level 1	704 ft²	65.42 m²
10	Studios	Multi-Purpose Room	Level 1	451 ft²	41.89 m²
11	Studios	Studio - Weaving	Level 1	942 ft²	87.48 m²
12	Studios	Studio - Pottery	Level 1	944 ft²	87.72 m²
13	Studios	Studio - Enamelling / Glass	Level 1	949 ft²	88.13 m²
14	Studios	Studio - Painting / Printing	Level 1	920 ft²	85.43 m²
15	Back-of-House	Custodian	Level 1	97 ft²	8.99 m²
16	Studios	WC - F	Level 1	73 ft²	6.77 m²
17	Studios	WC - M	Level 1	55 ft²	5.12 m²
18	Studios	WC - U	Level 1	111 ft²	10.32 m²
19	Circulation	Circulation	Level 1	3,980 ft²	369.79 m²
20	Theatre	Theatre	Level 1	6,690 ft²	621.49 m²
21	Public	WC - F	Level 1	510 ft²	47.33 m²
22	Public	WC - Universal	Level 1	116 ft²	10.78 m²
23	Public	WC - M	Level 1	212 ft²	19.66 m²
24	Back-of-House	Custodian	Level 1	107 ft²	9.96 m²
25	Back-of-House	Catering Kitchen	Level 1	246 ft²	22.84 m²
26	Back-of-House	Mech Access	Level 1	146 ft²	13.57 m²
27	Back-of-House	Storage	Level 1	346 ft²	32.19 m²
28	Back-of-House	Loading and Work Room	Level 1	846 ft²	78.61 m²
29	Back-of-House	Circulation	Level 1	368 ft²	34.18 m²
30	Back-of-House	Office	Level 1	51 ft²	4.77 m²
31	Back-of-House	Group Dressing Room	Level 1	138 ft²	12.79 m²
32	Back-of-House	Dressing Room (2 person)	Level 1	114 ft²	10.56 m²
33	Back-of-House	Dressing Room (2 person)	Level 1	114 ft²	10.56 m²
34	Back-of-House	Green Room	Level 1	152 ft²	14.08 m²
35	Back-of-House	Circulation	Level 1	542 ft²	50.38 m²
36	Back-of-House	WC - Unisex	Level 1	42 ft²	3.90 m²
37	Back-of-House	WC - Unisex	Level 1	35 ft²	3.27 m²
38	Studios	Storage	Level 1	151 ft²	14.02 m²
39	Theatre	SLL	Level 1	49 ft²	4.51 m²
40	Theatre	SLL	Level 1	49 ft²	4.55 m²
41	Back-of-House	Control Room	Level 2	441 ft²	40.93 m²
42	Back-of-House	Mech Room	Level 2	1,202 ft²	111.66 m²
				28,106 ft²	2,611.10 m²

NOTE: Areas in this schedule are measured to centreling of wall.

1 First Floor Plan  
1 : 150

Preferred Option - First Floor Plan

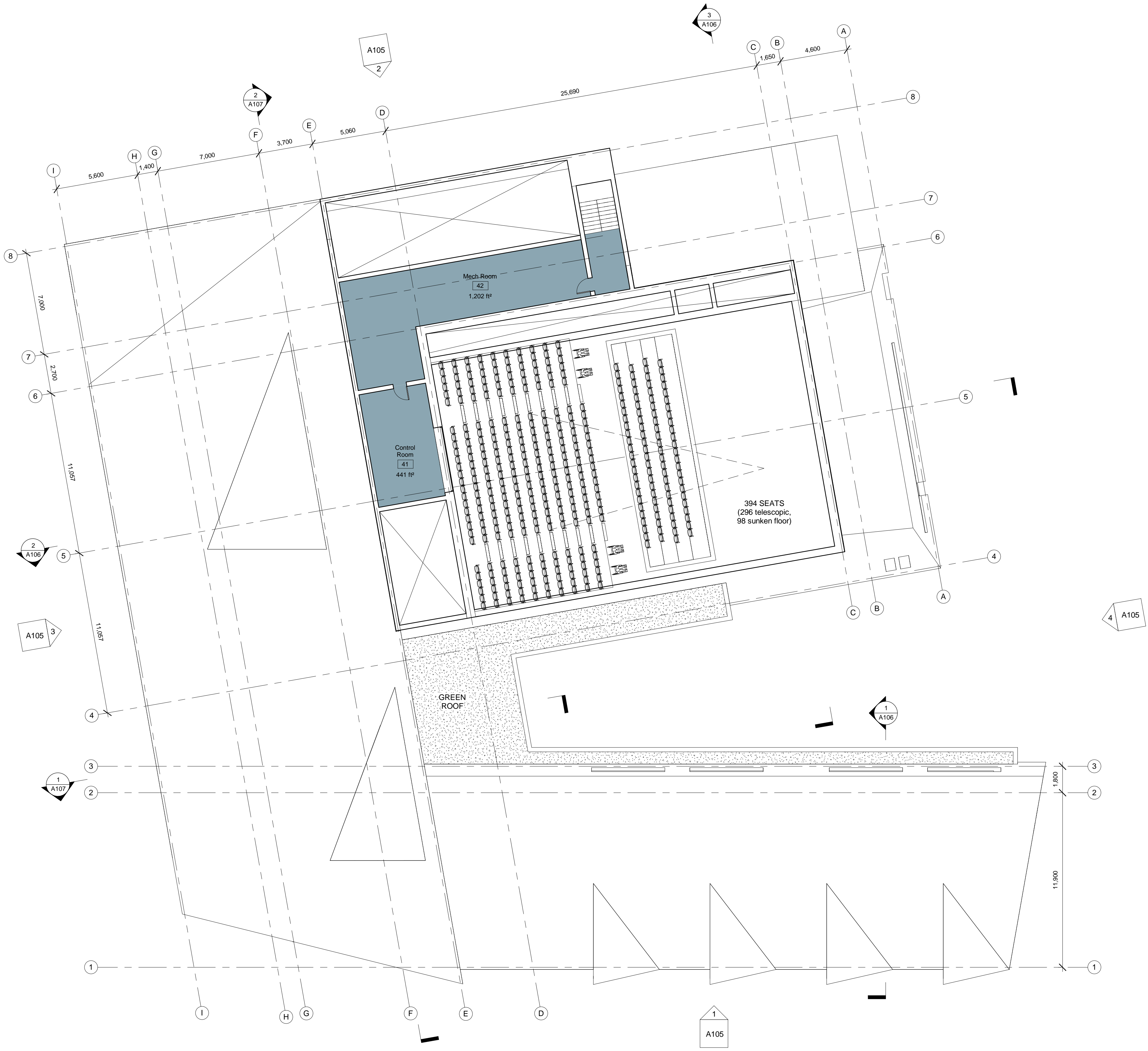


Arts and Culture Centre 20-046  
City of Elliot Lake

2021-06-25

BrookMcIlroy/





Department Legend

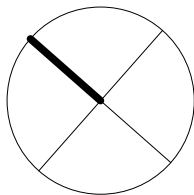
Back-of-House

#	Department	Name	Level	Area (sf)	Area (sm)
1	Public	Visitor Info / Front Desk / Ticket Sales	Level 1	161 ft²	14.94 m²
2	Public	Gift Shop / Cafe	Level 1	431 ft²	40.01 m²
3	Back-of-House	Coat Check	Level 1	118 ft²	10.96 m²
4	Back-of-House	Office	Level 1	341 ft²	31.72 m²
5	Gallery	Gallery	Level 1	1,544 ft²	143.46 m²
6	Gallery	Gallery Storage	Level 1	235 ft²	21.85 m²
7	Back-of-House	Storage	Level 1	111 ft²	10.35 m²
8	Museum	Museum Exhibit	Level 1	3,274 ft²	304.15 m²
9	Museum	Workshop / Archiving	Level 1	704 ft²	65.42 m²
10	Studios	Multi-Purpose Room	Level 1	451 ft²	41.89 m²
11	Studios	Studio - Weaving	Level 1	942 ft²	87.48 m²
12	Studios	Studio - Pottery	Level 1	944 ft²	87.72 m²
13	Studios	Studio - Enamelling / Glass	Level 1	949 ft²	88.13 m²
14	Studios	Studio - Painting / Printing	Level 1	920 ft²	85.43 m²
15	Back-of-House	Custodian	Level 1	97 ft²	8.99 m²
16	Studios	WC - F	Level 1	73 ft²	6.77 m²
17	Studios	WC - M	Level 1	55 ft²	5.12 m²
18	Studios	WC - U	Level 1	111 ft²	10.32 m²
19	Circulation	Circulation	Level 1	3,980 ft²	369.79 m²
20	Theatre	Theatre	Level 1	6,690 ft²	621.49 m²
21	Public	WC - F	Level 1	510 ft²	47.33 m²
22	Public	WC - Universal	Level 1	116 ft²	10.78 m²
23	Public	WC - M	Level 1	212 ft²	19.66 m²
24	Back-of-House	Custodian	Level 1	107 ft²	9.96 m²
25	Back-of-House	Catering Kitchen	Level 1	246 ft²	22.84 m²
26	Back-of-House	Mech Access	Level 1	146 ft²	13.57 m²
27	Back-of-House	Storage	Level 1	346 ft²	32.19 m²
28	Back-of-House	Loading and Work Room	Level 1	846 ft²	78.61 m²
29	Back-of-House	Circulation	Level 1	368 ft²	34.18 m²
30	Back-of-House	Office	Level 1	51 ft²	4.77 m²
31	Back-of-House	Group Dressing Room	Level 1	138 ft²	12.79 m²
32	Back-of-House	Dressing Room (2 person)	Level 1	114 ft²	10.56 m²
33	Back-of-House	Dressing Room (2 person)	Level 1	114 ft²	10.56 m²
34	Back-of-House	Green Room	Level 1	152 ft²	14.08 m²
35	Back-of-House	Circulation	Level 1	542 ft²	50.38 m²
36	Back-of-House	WC - Unisex	Level 1	42 ft²	3.90 m²
37	Back-of-House	WC - Unisex	Level 1	35 ft²	3.27 m²
38	Studios	Storage	Level 1	151 ft²	14.02 m²
39	Theatre	SLL	Level 1	49 ft²	4.51 m²
40	Theatre	SLL	Level 1	49 ft²	4.55 m²
41	Back-of-House	Control Room	Level 2	441 ft²	40.93 m²
42	Back-of-House	Mech Room	Level 2	1,202 ft²	111.66 m²
				28,106 ft²	2,611.10 m²

NOTE: Areas in this schedule are measured to centreling of wall.

1 Second Floor Plan  
1 : 150

Preferred Option - Second Floor Plan

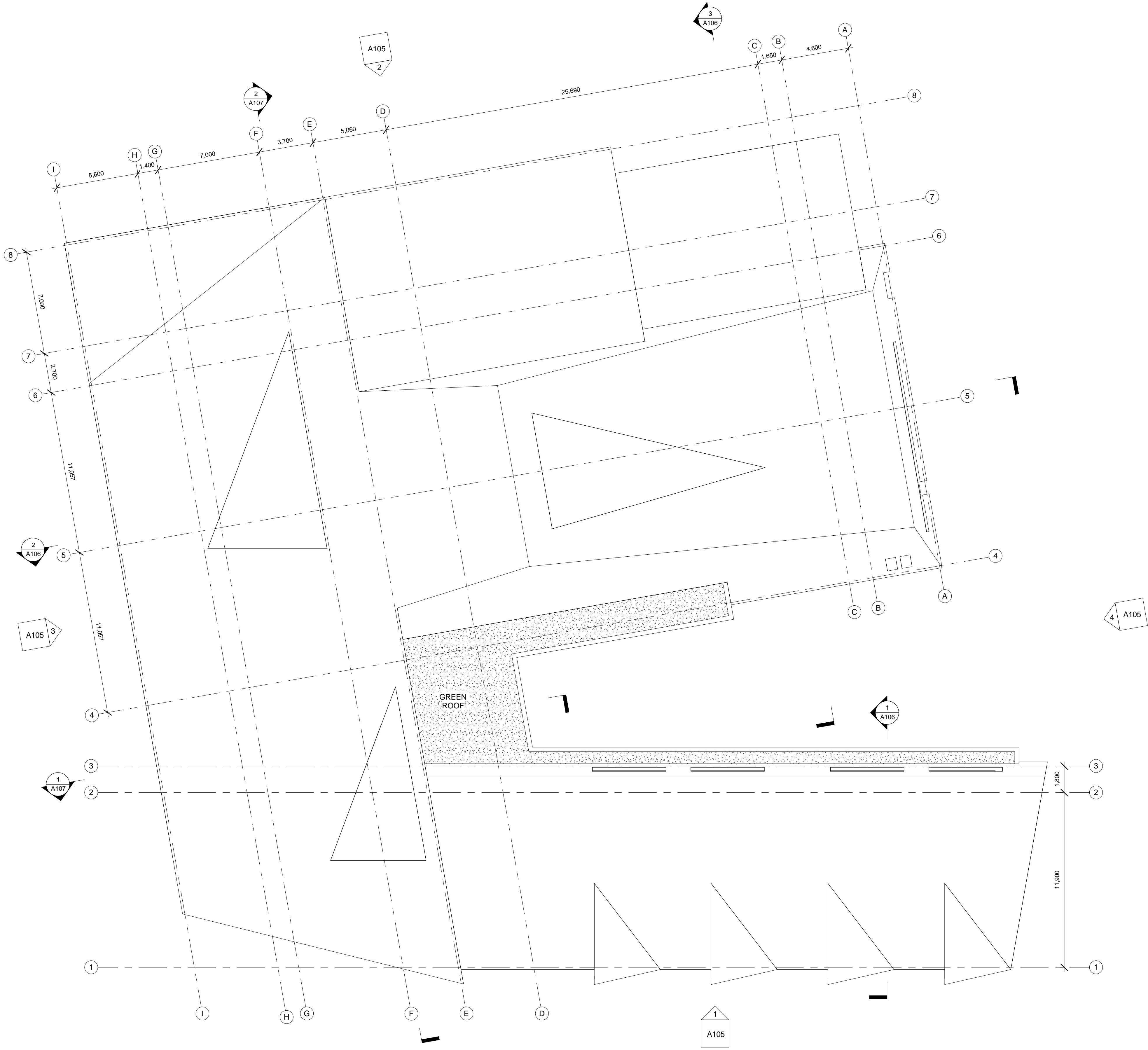


Arts and Culture Centre 20-046  
City of Elliot Lake

2021-06-25

BrookMcIlroy/



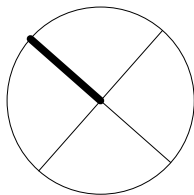


1 Roof Plan  
1 : 150

Preferred Option - Roof Plan

#	Department	Name	Level	Area (sf)	Area (sm)
1	Public	Visitor Info / Front Desk / Ticket Sales	Level 1	161 ft²	14.94 m²
2	Public	Gift Shop / Cafe	Level 1	431 ft²	40.01 m²
3	Back-of-House	Coat Check	Level 1	118 ft²	10.96 m²
4	Back-of-House	Office	Level 1	341 ft²	31.72 m²
5	Gallery	Gallery	Level 1	1,544 ft²	143.46 m²
6	Gallery	Gallery Storage	Level 1	235 ft²	21.85 m²
7	Back-of-House	Storage	Level 1	111 ft²	10.35 m²
8	Museum	Museum Exhibit	Level 1	3,274 ft²	304.15 m²
9	Museum	Workshop / Archiving	Level 1	704 ft²	65.42 m²
10	Studios	Multi-Purpose Room	Level 1	451 ft²	41.89 m²
11	Studios	Studio - Weaving	Level 1	942 ft²	87.48 m²
12	Studios	Studio - Pottery	Level 1	944 ft²	87.72 m²
13	Studios	Studio - Enamelling / Glass	Level 1	949 ft²	88.13 m²
14	Studios	Studio - Painting / Printing	Level 1	920 ft²	85.43 m²
15	Back-of-House	Custodian	Level 1	97 ft²	8.99 m²
16	Studios	WC - F	Level 1	73 ft²	6.77 m²
17	Studios	WC - M	Level 1	55 ft²	5.12 m²
18	Studios	WC - U	Level 1	111 ft²	10.32 m²
19	Circulation	Circulation	Level 1	3,980 ft²	369.79 m²
20	Theatre	Theatre	Level 1	6,690 ft²	621.49 m²
21	Public	WC - F	Level 1	510 ft²	47.33 m²
22	Public	WC - Universal	Level 1	116 ft²	10.78 m²
23	Public	WC - M	Level 1	212 ft²	19.66 m²
24	Back-of-House	Custodian	Level 1	107 ft²	9.96 m²
25	Back-of-House	Catering Kitchen	Level 1	246 ft²	22.84 m²
26	Back-of-House	Mech Access	Level 1	146 ft²	13.57 m²
27	Back-of-House	Storage	Level 1	346 ft²	32.19 m²
28	Back-of-House	Loading and Work Room	Level 1	846 ft²	78.61 m²
29	Back-of-House	Circulation	Level 1	368 ft²	34.18 m²
30	Back-of-House	Office	Level 1	51 ft²	4.77 m²
31	Back-of-House	Group Dressing Room	Level 1	138 ft²	12.79 m²
32	Back-of-House	Dressing Room (2 person)	Level 1	114 ft²	10.56 m²
33	Back-of-House	Dressing Room (2 person)	Level 1	114 ft²	10.56 m²
34	Back-of-House	Green Room	Level 1	152 ft²	14.08 m²
35	Back-of-House	Circulation	Level 1	542 ft²	50.38 m²
36	Back-of-House	WC - Unisex	Level 1	42 ft²	3.90 m²
37	Back-of-House	WC - Unisex	Level 1	35 ft²	3.27 m²
38	Studios	Storage	Level 1	151 ft²	14.02 m²
39	Theatre	SLL	Level 1	49 ft²	4.51 m²
40	Theatre	SLL	Level 1	49 ft²	4.55 m²
41	Back-of-House	Control Room	Level 2	441 ft²	40.93 m²
42	Back-of-House	Mech Room	Level 2	1,202 ft²	111.66 m²
				28,106 ft²	2,611.10 m²

NOTE: Areas in this schedule are measured to centreling of wall.

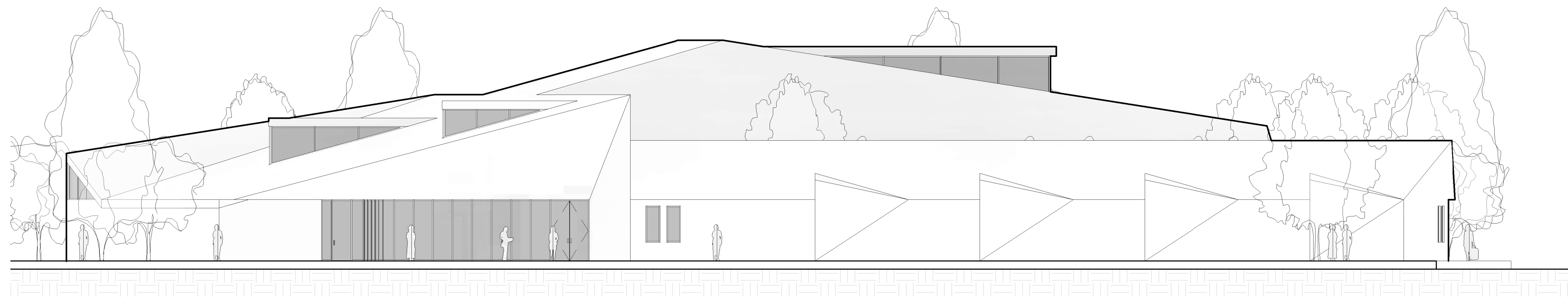


Arts and Culture Centre 20-046  
City of Elliot Lake

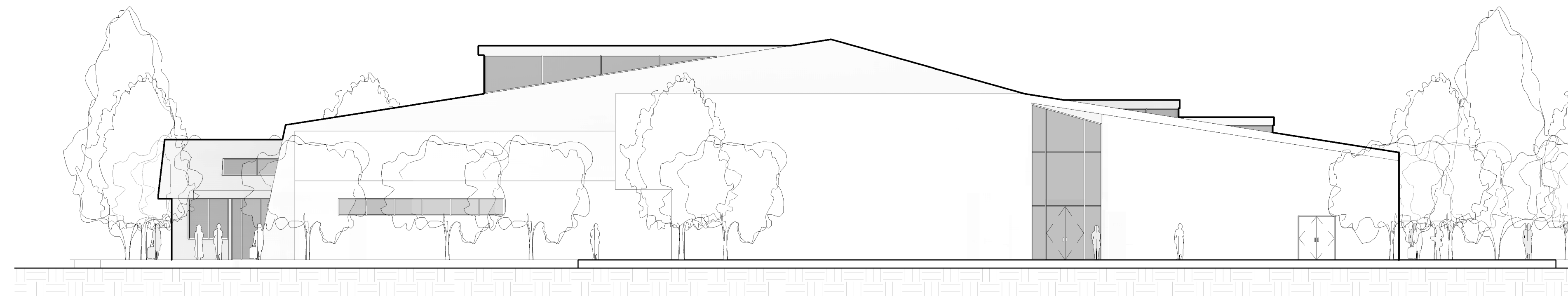
2021-06-25

BrookMcIlroy/

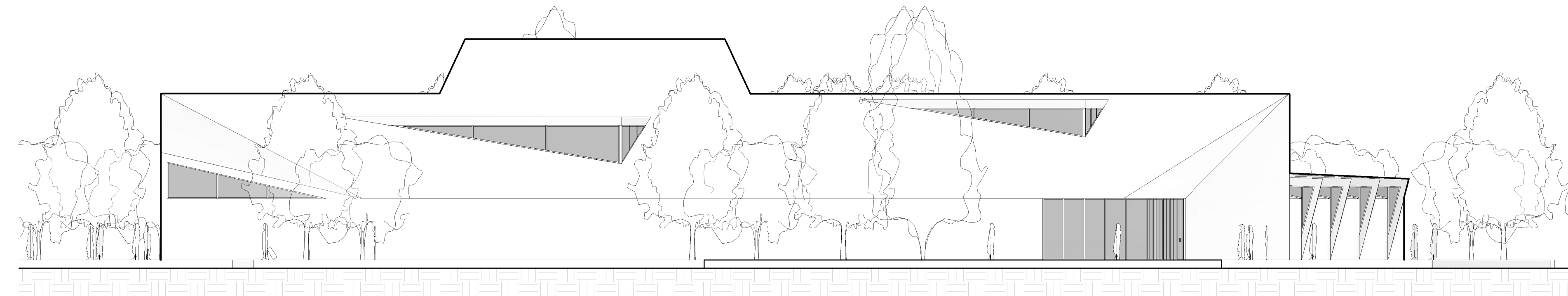




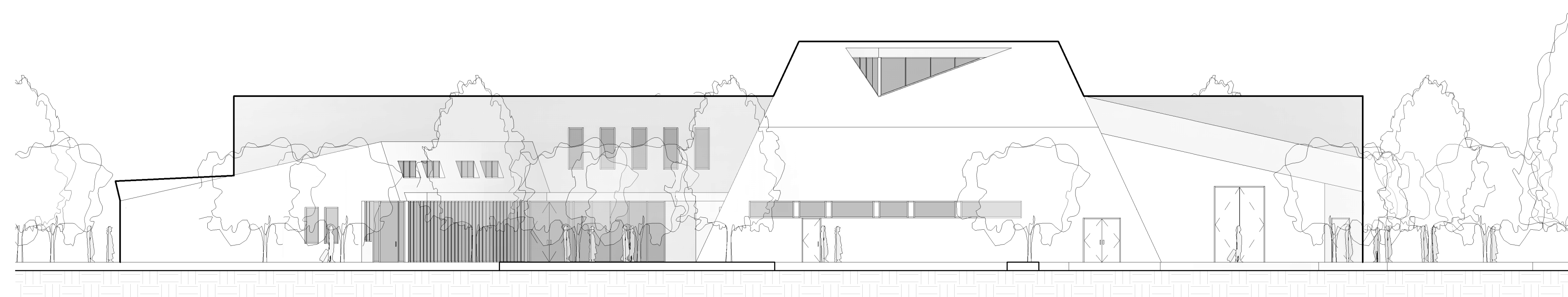
1 South  
1 : 150



2 North  
1 : 150

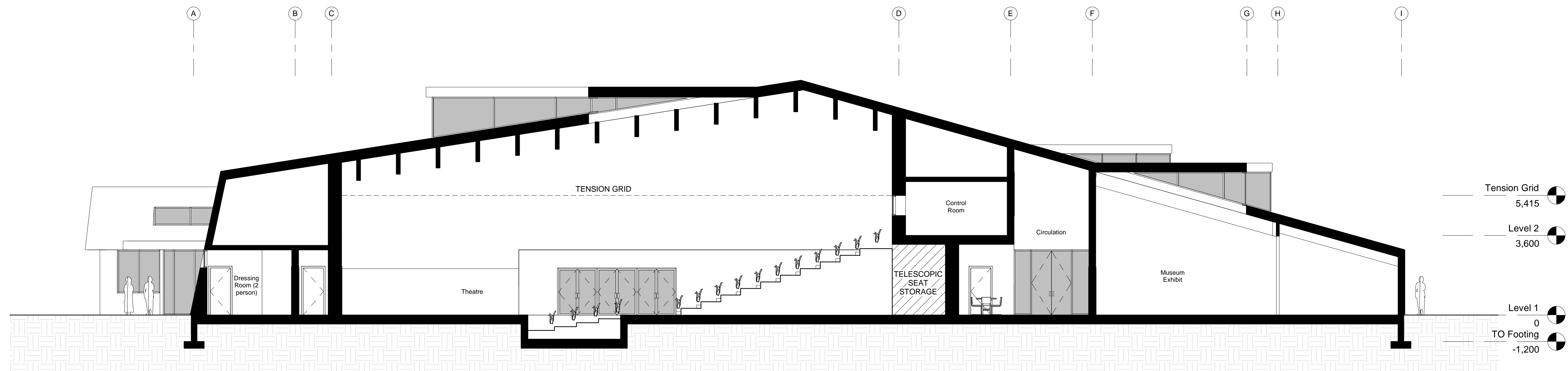
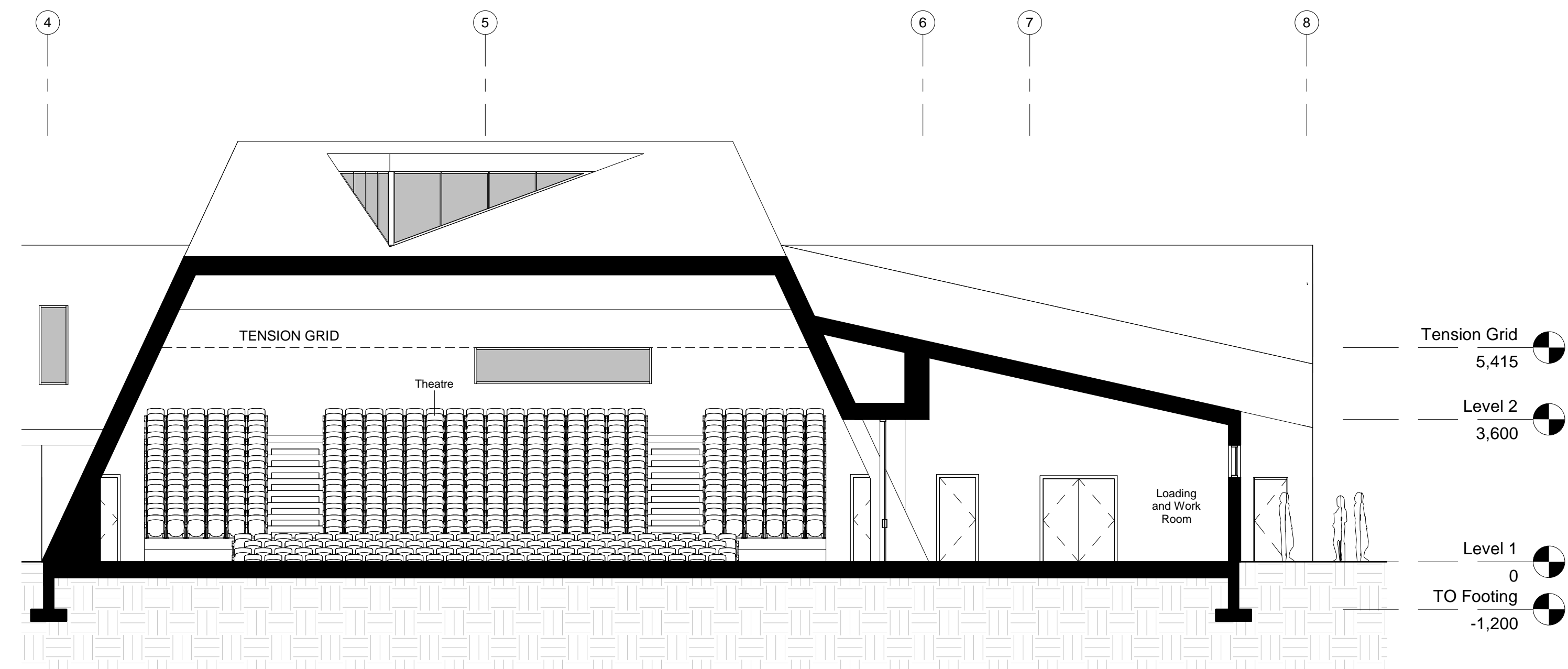
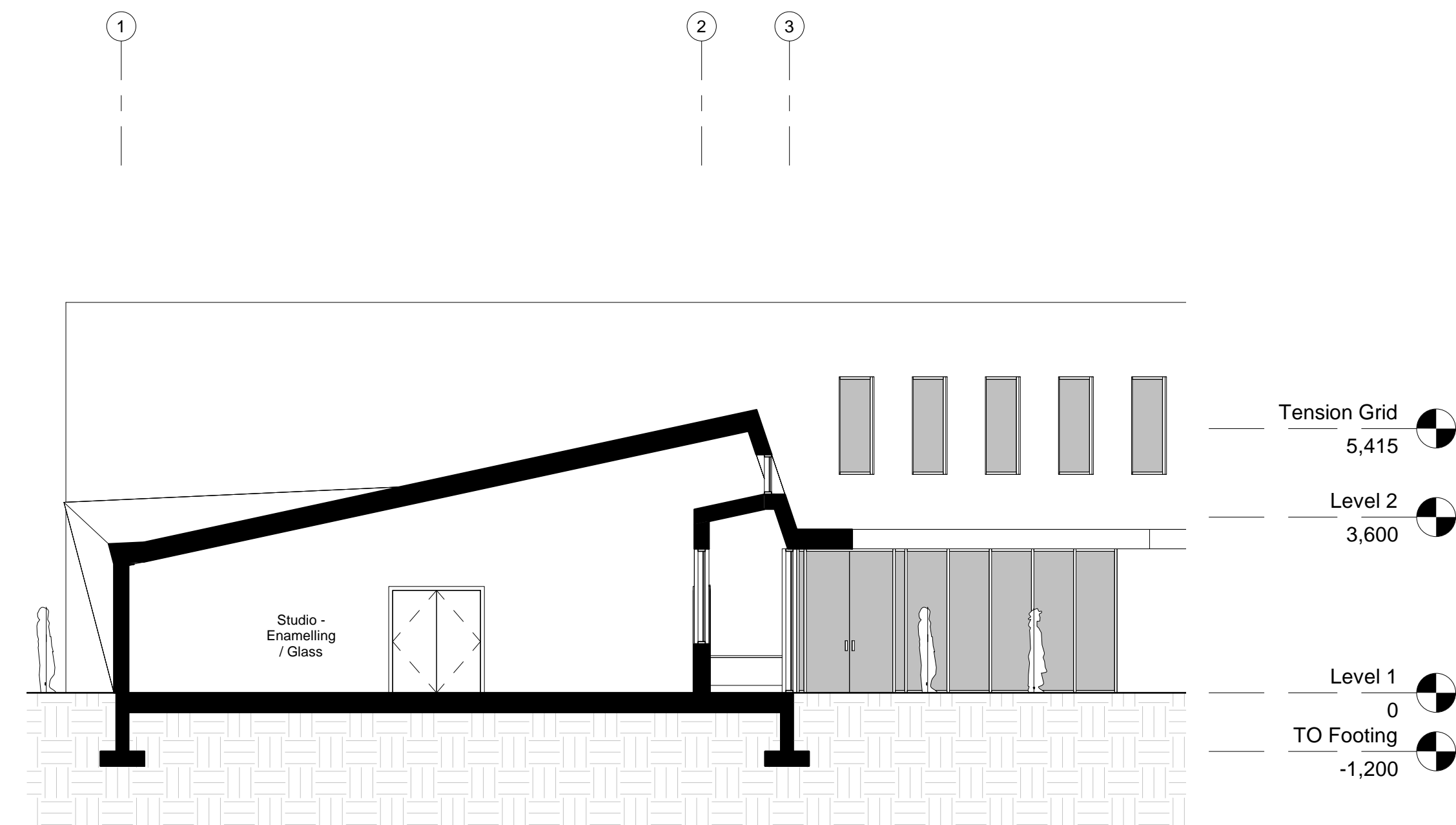


3 West  
1 : 150

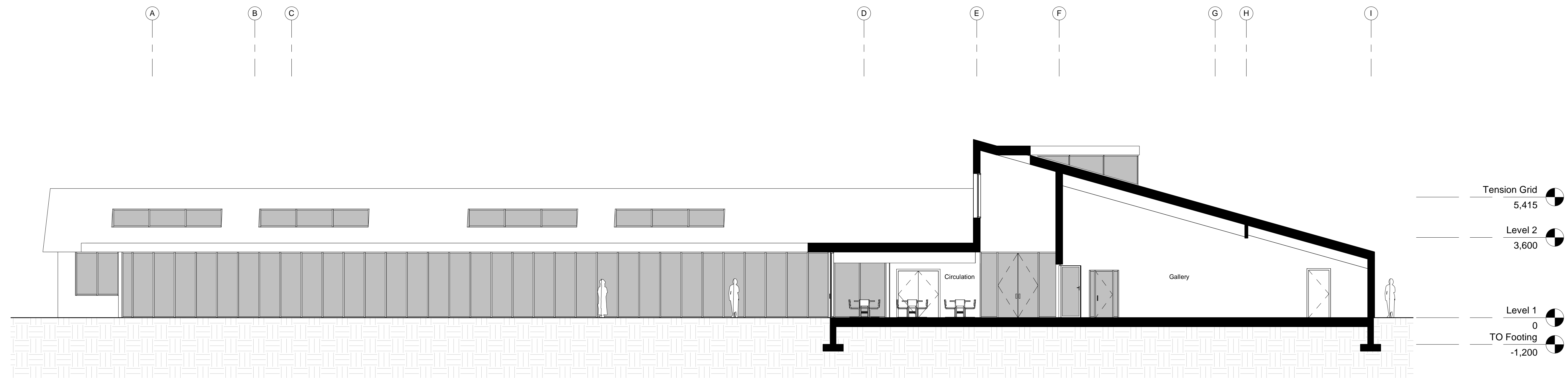


4 East  
1 : 150

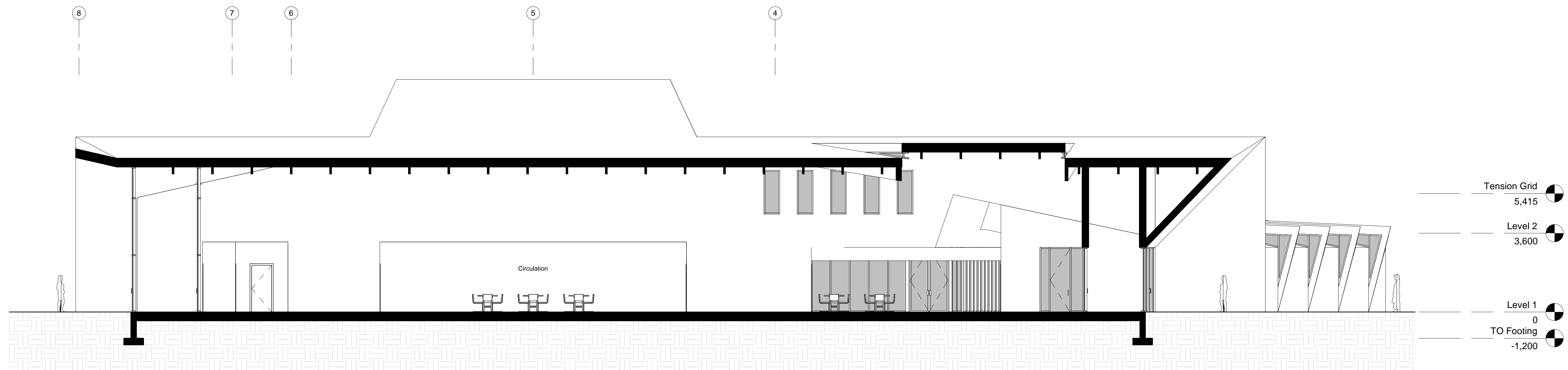






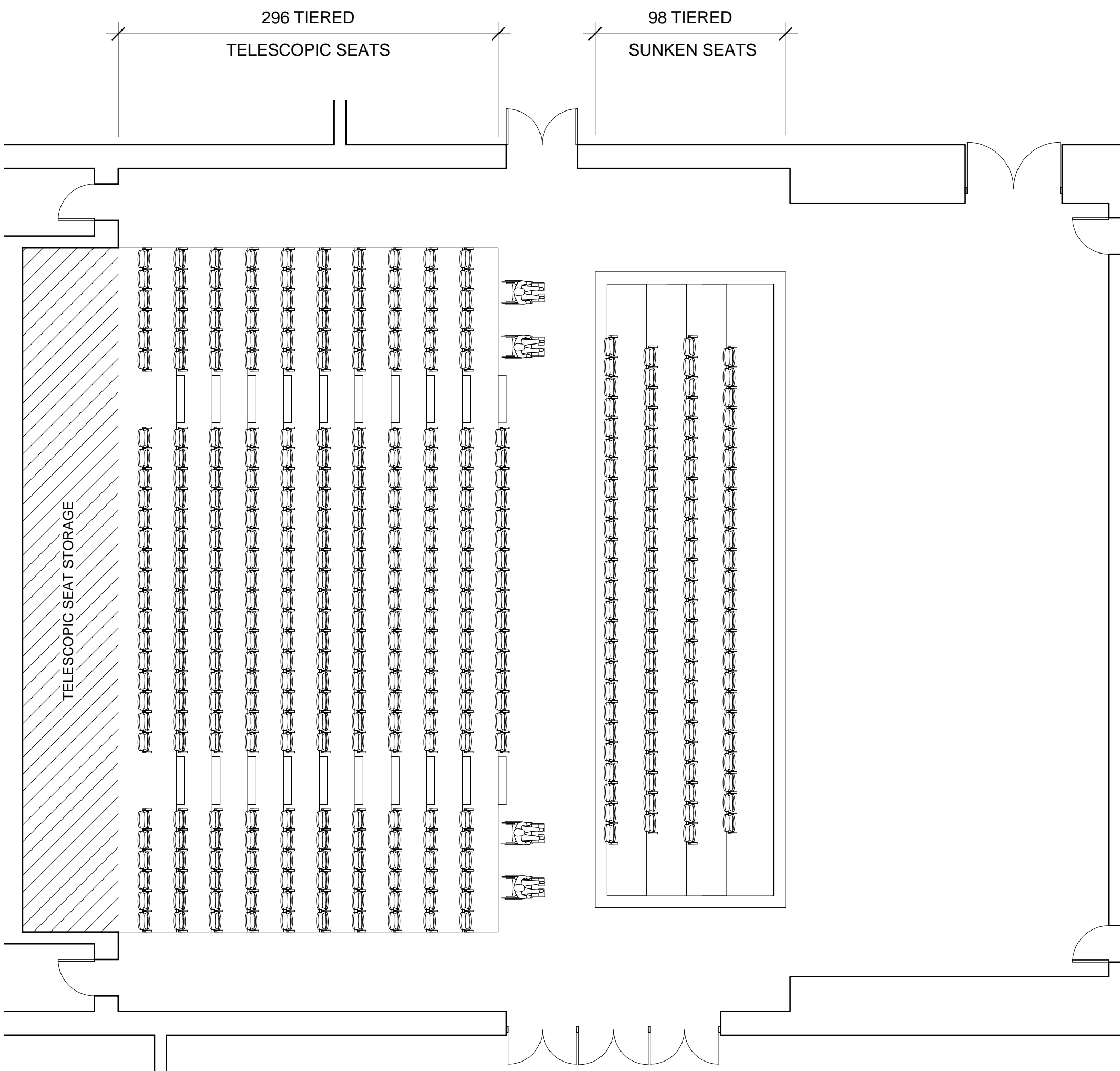


1 Entry Area and Courtyard  
1 : 100

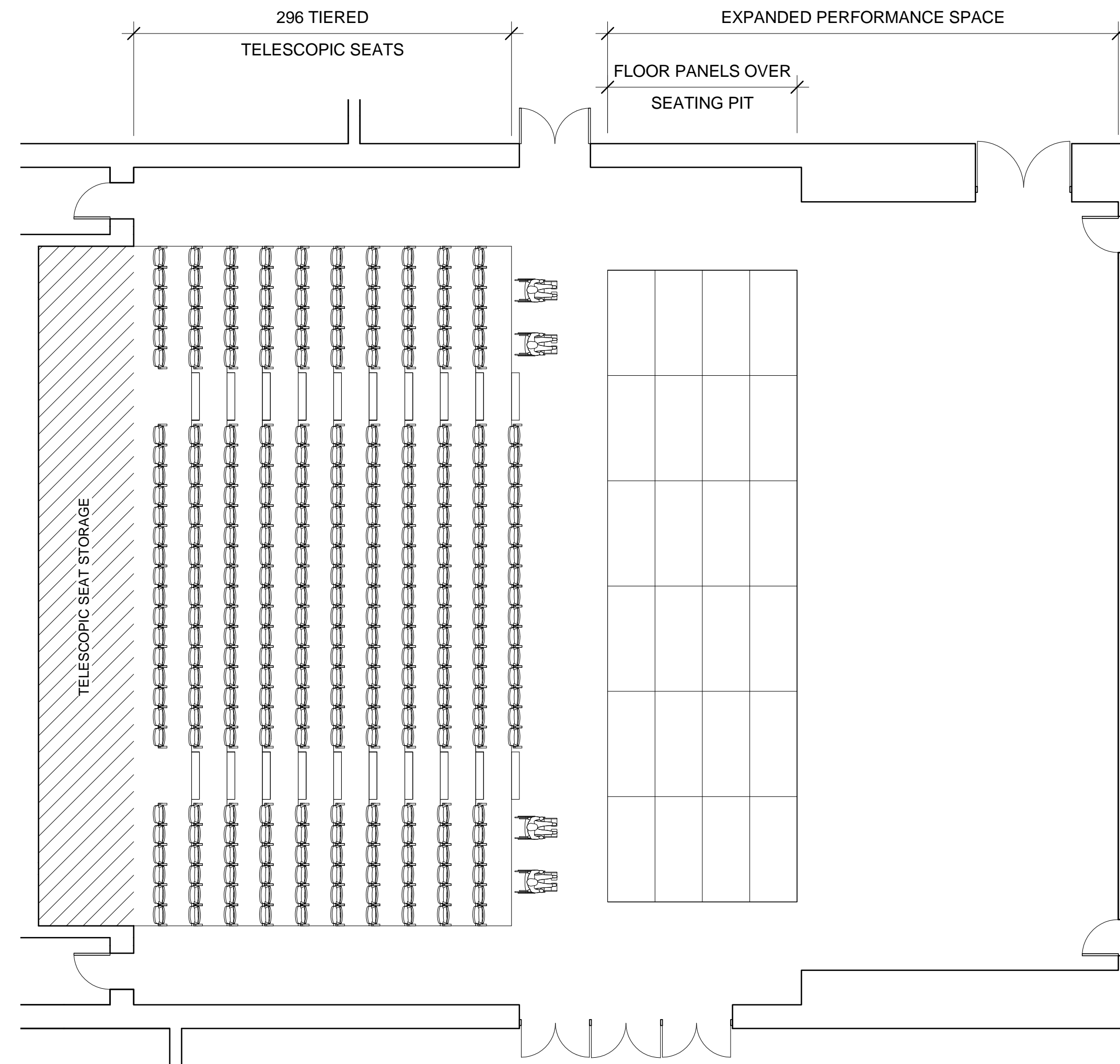


2 Circulation Axis  
1 : 100

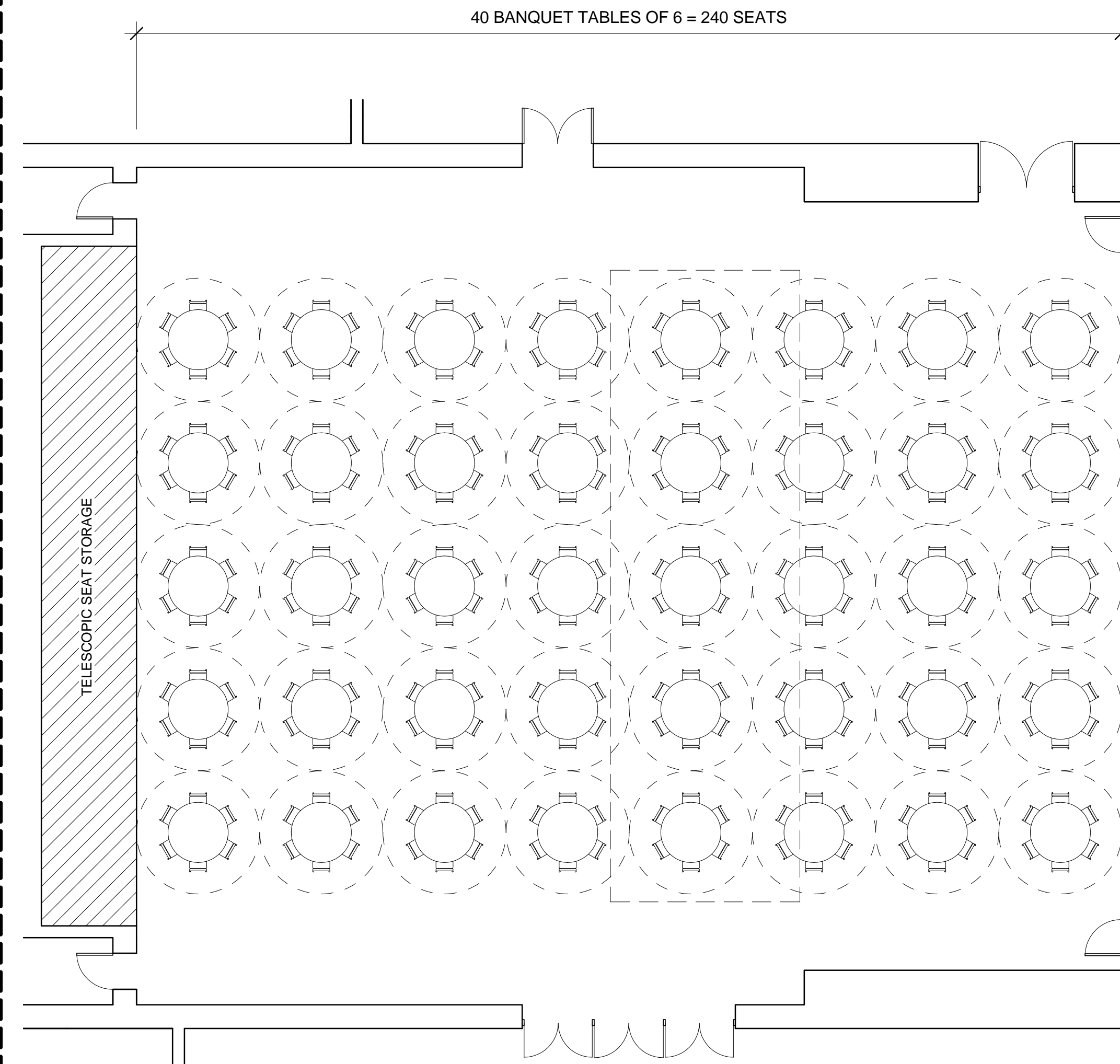




1 Full Seats  
1 : 100

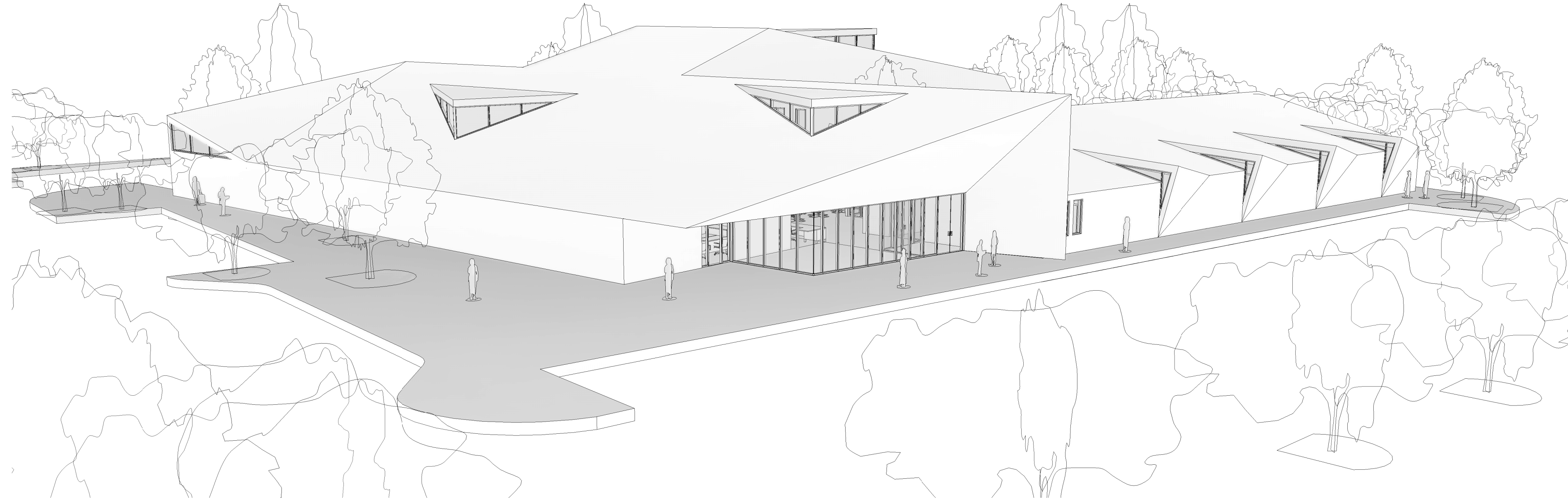


2 Partial Seats  
1 : 100



3 Banquet Tables  
1 : 100

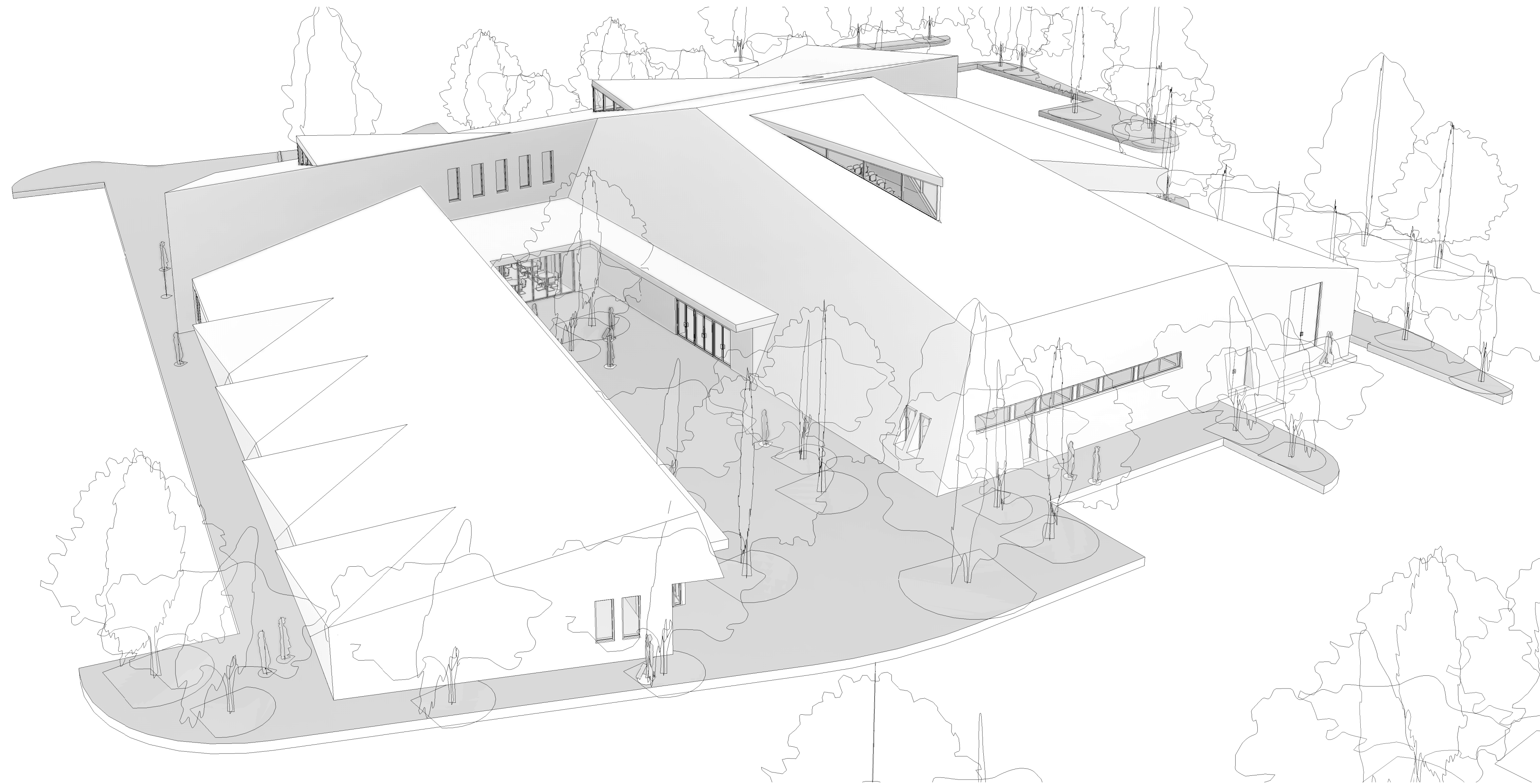




1 Exterior Perspective 1



3 Interior Perspective 1



2 Exterior Perspective 2



# DRAFT





# DRAFT





# DRAFT

