



Sprung Structures

A Better Way To Build

Rapid Construction. Design Flexibility. Performance & Durability. Lower Overall Costs.



Philip S. Miller Park

Town of Castle Rock, Colorado

Pool Enclosure / Aquatics Center

Project Overview:

Client: Philip S. Miller Park, Town of Castle Rock, Colorado

Challenge: Castle Rock has grown rapidly in the past decade, with the town's population tripling in the past 10 years. The population was 18,000 in the 80's and has steadily increased to over 60,000 residents. The town is very strict about the building codes and architectural controls. Sprung was the perfect solution for their quality and long-term growth needs.

Solution: **110' wide by 105' long** Sprung Structure with encapsulated insulation with built in conjunction with a 64,000 square foot building for various organized athletic programs.

Results: Year round Aquatic Center. Encapsulated insulation over pool application, aesthetics, quality, budget and speed of construction time-line. Features the customer loves about the structure. Bright interior, energy efficiency, maintenance free. Short construction time-line, price and year round outdoor feel and quality acoustics. Annual Revenue for the Pool 158,000.

This Sprung Structure Features:

- Indoor leisure pool with slide
- 4 lap lanes (25 yard)
- Leisure pool with zero-depth area
- Vortex whirlpool

The Philip S. Miller Park & Fieldhouse is a 225-acre regional park that features a 64,400 square foot multi-purpose field house and indoor swimming pool, an outdoor amphitheater and Millhouse building, picnic shelters, park restrooms, concrete trails, adventure playground, two synthetic turf athletic fields, and core plaza area with spray features. Site features include asphalt off-street parking and park roadways, concrete trails, storm sewer and drainage improvements, a lined pond and Dawson Aquifer well, parking and roadway lighting and irrigation, and landscaping.



PAGE 3



June 16, 2017

The Town of Castle Rock built a new 64,443 square foot, two story recreational facilities and the [Miller Activity Complex \(MAC\)](#) is a crowning jewel of the Town with the 300-acre [Philip S. Miller Park](#).

Sprung Structures (www.sprung.com) was selected to enclose the new pool area for the new Miller Activity Complex in Castle Rock, Colorado. The enclosed 110 wide x 105 long pool area boasts an impressive indoor aquatics center with four lap lanes, a winding water slide, a zero-entry section with smaller slide and water table, and a vortex whirlpool that simulates rushing water currents.

Sprung Structures was selected by the Architect for its reputation, engineered strength, and quality, longevity of use and energy efficiency.

Uniquely engineered and designed to connect directly to the two-story conventionally constructed gymnasium and locker rooms. The Sprung Structure is a perfect solution, boasting its energy efficient, fully encapsulated R30 insulation package; and still offering a natural "outdoor feel" with its translucent daylight panels running the entire length of the structures peak.

Sprung Structures was instrumental in working with the Architect, (Sink Combs Dethlefs) and the contractor (Turner Construction) in getting the structure erected and completed on time and on budget for the Town of Castle Rock administration.

The 11,550 square foot pool area also has four 15' wide x 16' High solar lite garage doors that electrically open as well as 3 sets of double glass doors to enjoy the outdoor pool deck and the summer Castle Rock weather.

The entire complex includes amenities such as:

- Two multi-use party rooms adjacent to the pool
- Indoor leisure pool with slide, zero-entry section, water table and vortex whirlpool
- Four 25-yard lap lanes
- Batting cages
- Children's play structure with 23-foot-tall slide
- Beam interactive floor games
- 18-hole golf simulator
- Indoor full-sized and half-sized synthetic field
- Trampoline featuring 16 trampoline beds
- Lounge area with fireplace, Lego table and train table
- Specialty fitness classes such as TRX and Fit Moms

We highly recommend Sprung Structures for any municipality or aquatics programs both-commercial or private use. Sprung Structures is the perfect year round pool or aquatic center enclosure solution.

Sincerely,

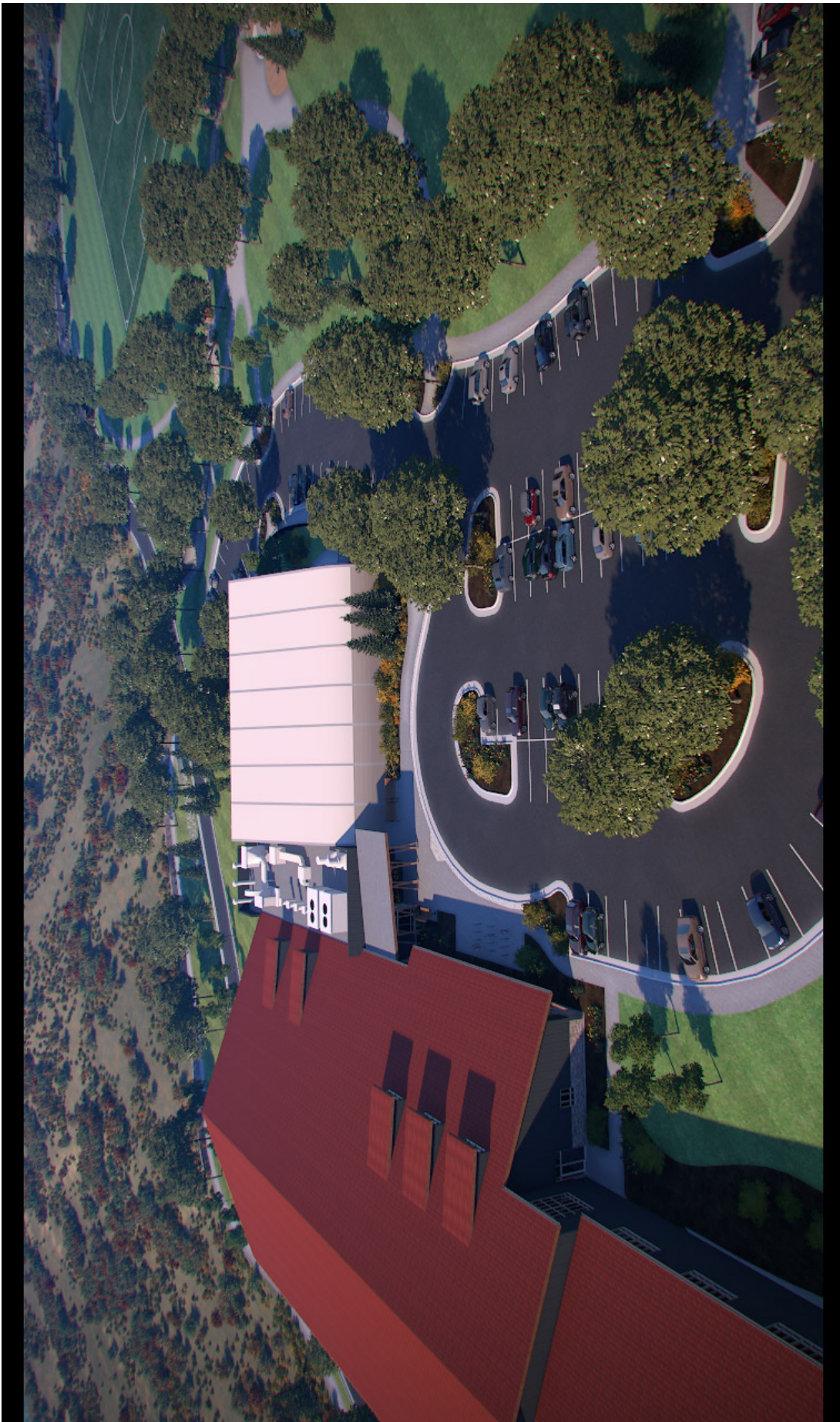
Mike Kilman

Mike Kilman
Recreation Facilities Supervisor
Town of Castle Rock

<http://co-castlerock2.civicplus.com/Facilities/Facility/Details/Miller-Activity-Complex-MAC-110>
<http://co-castlerock2.civicplus.com/Facilities/Facility/Details/Philip-S-Miller-Park-55>

PAGE 4

Rendering





Seasonal opening Solar-Lite doors



Slide







Top 5 Reasons to Choose Sprung:

- 1. Engineered for High Moisture Environments** – Benefit from the added protection of Sprung's specially designed performance pool insulation system.
- 2. Sunlight and a Bright, Welcoming Space** – Install daylight panels and glazing walls (glass curtain walls) to allow more natural light to penetrate and brighten up the interior space.
- 3. Solar Light Doors** – Add additional natural light to your indoor environment with solar light doors, which can be opened during warmer months to enhance swimming environments.
- 4. Rapid Construction Schedule** – Significantly reduce construction costs and timelines compared to conventional construction.
- 5. Superior Performing Playing Environment** – Provide a bright and spacious playing environment with a tall peak height, fortified with a fully tensioned white interior membrane.

Sprung Structures

For four generations, Sprung has designed and patented tensioned membrane technology. Inventory-ready building solutions that consistently outperform other building alternatives.

- Sprung structures can be dismantled, reconfigured, re-erected, or relocated for almost any number of applications and virtually every market sector in the world.
- Beyond providing all-weather shelter for equipment and inventory, Sprung structures provide bright, spacious high performance, energy efficient environments.
- To date, Sprung has completed over 12,000 structures in more than 100 countries worldwide.