

REPORT OF THE INTERIM MUSEUM CURATOR

OBJECTIVE

To appeal to the Recreation and Culture Standing Committee to recommend to Council the reconsideration of Res. 156/21 to add 1000 SF of space to the Nuclear and Mining Museum in upcoming designs of the new Arts and Culture Centre.

RECOMMENDATION

THAT the report of the Interim Museum Curator dated May 13, 2021, be received;

AND THAT the Recreation and Culture Standing Committee recommend to Council the reconsideration of Res. 156/21, with an amendment to add 1000 SF of space to the Nuclear and Mining Museum in future iterations of the design for the new Arts and Culture Centre.

Respectfully Submitted



Amelia D'Amato
Interim Museum Curator

Approved

Approved



Darla Hennessey
Manager of Recreation and Culture

Daniel Gagnon
Chief Administrative Officer

BACKGROUND

At the April 26, 2021, Council meeting, the following resolution concerning the design options of the new Arts and Culture Centre was passed:

Res. 156/21

Moved by: S. Finamore

Seconded by: T. Turner

THAT Council approve design option 2A to proceed with further design and feasibility study.

AND THAT council direct staff and consultants to pursue net zero building options for the new facility.

Carried

This resolution approved of Design Option 2a as seen in Figure 1. In this design option, the Museum is designated 2,285 SF of exhibition space and 745 SF for storage, for a combined total space of 3,030 SF.

The first instance of this Design Option 2a being made available to the public was in the agenda for the April 26, 2021, Council meeting. This did not provide adequate time for the user groups and committees of Council to review the information and offer feedback before the design was approved by Council at the aforementioned meeting, which is why the Nuclear and Mining Museum Advisory Board urges them to reconsider the resolution.

ANALYSIS

It is the opinion of the Nuclear and Mining Museum Advisory Board that the space currently designated to the Museum in Design Option 2a is not appropriately sized to store the entirety of the its collection and provide suitable exhibition space. To mitigate this space issue, we would like to propose that 1000 SF of space be reallocated towards the museum in future designs of the new Arts and Culture Centre.

The space designated to the Museum for exhibition in the Lester B. Pearson Civic Centre was 3,787 SF, with the exact specification for storage unknown as this was spread throughout the building. While we are not intending to replicate the past museum in our new civic centre, we will still require the requisite room for permanent, circulating, and travelling exhibitions. We will also require the requisite storage space to provide room to house all of the City's artefacts and art collection properly in one secure area, providing also the space for further accessioning and condition reporting.

The advisory board and staff do not believe that the approved design of the new Arts and Culture Centre fulfill this need and urge for more space to be allocated to the new museum, of which they believe 1000 SF would be suitable.

FINANCIAL IMPACT

The impact of this recommendation on the Total Construction Cost of the new Arts and Culture Centre would be determined by the architect consultants.

LINKS TO STRATEGIC PLAN

This project aligns with the City's Strategic Plan through:

- Support the Arts and Culture Community
 - Strategic, vibrant, relevant museum for the future.

SUMMARY

This recommendation for 1000 SF to be added to the Nuclear and Mining Museum in the plans for the new Arts and Culture Centre will provide more adequate space for museum storage and exhibition to ensure the continued growth and relevance of our community's heritage into the future.

Figure 1:

Arts and Culture Hub

DESIGN OPTION 2a

*Theatre without mezzanine seating
Studios located at grade
Centralized entry services*

A New **ARTS AND CULTURE HUB** for the
City of Elliot Lake

April 23, 2021

BrookMcIlroy/



1 Site Plan
1 : 500

OPTION 2a - Site Plan



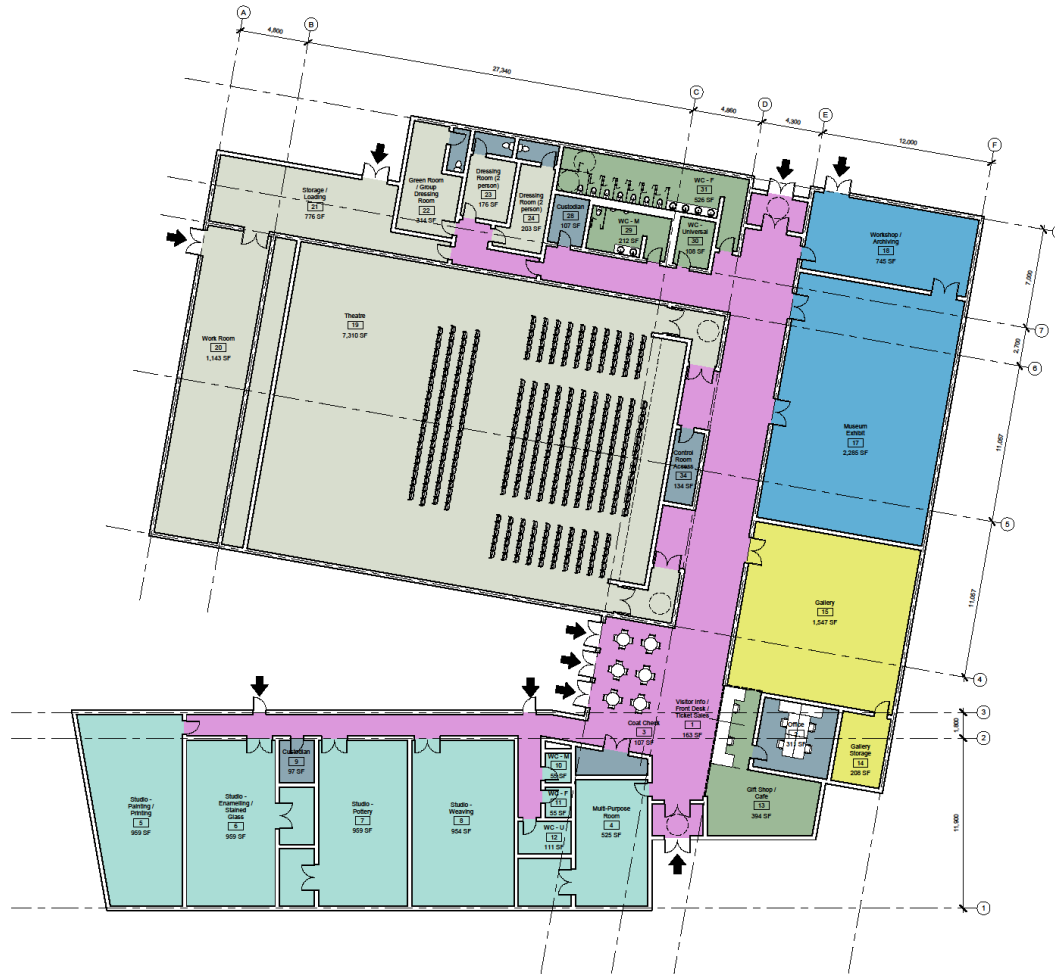
BrookMcIlroy
Arts and Culture Hub 25-046
 City of Grand Lake
 2021-02-18

Department Legend

- Public
- Theatre
- Gallery
- Museum
- Studios
- Circulation
- Back-of-House

#	Department	Name	Level	Area (sf)	Area (sm)
1	Public	Visitor Info / Front Desk / Ticket Sales	Level 1	183 SF	16.16 m²
2	Back-of-House	Office	Level 1	311 SF	28.93 m²
3	Back-of-House	Court Check	Level 1	107 SF	9.92 m²
4	Studios	Multi-Purpose Room	Level 1	525 SF	48.80 m²
5	Studios	Studio - Painting / Printing	Level 1	950 SF	86.13 m²
6	Studios	Studio - Enamelling / Stained Glass	Level 1	950 SF	86.11 m²
7	Studios	Studio - Pottery	Level 1	950 SF	86.10 m²
8	Studios	Studio - Weaving	Level 1	954 SF	88.00 m²
9	Back-of-House	Custodian	Level 1	67 SF	6.09 m²
10	Studios	WC - M	Level 1	26 SF	2.42 m²
11	Studios	WC - F	Level 1	26 SF	2.42 m²
12	Studios	WC - U	Level 1	111 SF	10.32 m²
13	Public	Gift Shop / Cafe	Level 1	394 SF	36.00 m²
14	Gallery	Gallery Storage	Level 1	238 SF	21.95 m²
15	Gallery	Gallery	Level 1	1,547 SF	143.88 m²
17	Museum	Museum Exhibit	Level 1	2,285 SF	212.28 m²
18	Museum	Workshop / Archiving	Level 1	745 SF	68.21 m²
19	Theatre	Theatre	Level 1	7,310 SF	678.17 m²
20	Theatre	Work Room	Level 1	1,143 SF	105.15 m²
21	Theatre	Storage / Loading	Level 1	770 SF	72.11 m²
22	Theatre	Green Room / Group Dressing Room	Level 1	314 SF	29.21 m²
23	Theatre	Dressing Room (2 person)	Level 1	176 SF	16.30 m²
24	Theatre	Dressing Room (2 person)	Level 1	203 SF	18.90 m²
25	Back-of-House	WC - Unisex	Level 1	54 SF	5.07 m²
26	Back-of-House	WC - Unisex	Level 1	58 SF	5.34 m²
27	Back-of-House	WC - Unisex	Level 1	56 SF	5.24 m²
28	Back-of-House	Custodian	Level 1	107 SF	9.95 m²
29	Public	WC - M	Level 1	212 SF	19.60 m²
30	Public	WC - Universal	Level 1	108 SF	10.08 m²
31	Public	WC - F	Level 1	538 SF	48.91 m²
32	Circulation	Circulation	Level 1	165 SF	15.38 m²
33	Circulation	Circulation	Level 1	3,881 SF	356.52 m²
34	Back-of-House	Control Room Access	Level 1	134 SF	12.42 m²
35	Back-of-House	Control Room	Level 2	1,157 SF	107.48 m²
36	Studios	Storage	Level 1	157 SF	14.82 m²
				28,871 SF	2,650.06 m²

NOTE: Areas in this schedule are measured to geographics of wall



1 First Floor Plan
1:150

OPTION 2a - First Floor Plan



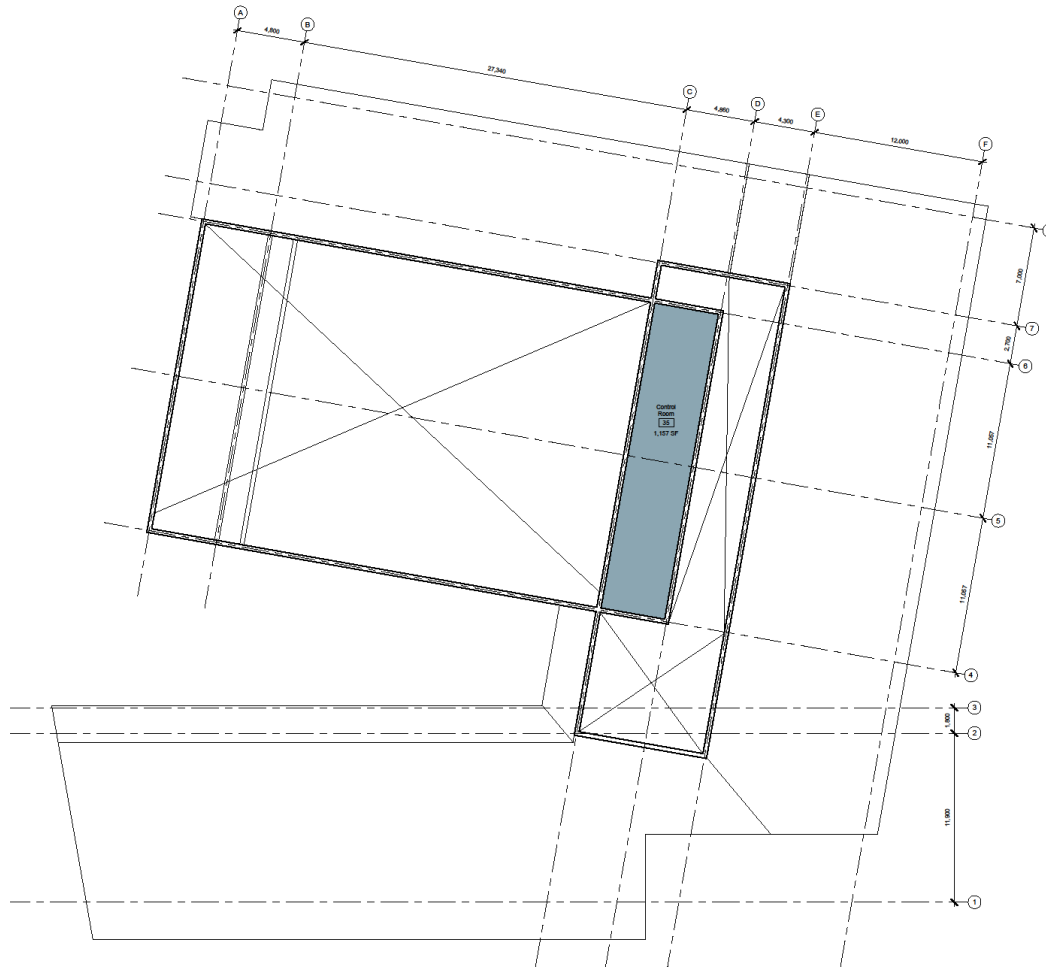
BrookMcIlroy
Architects and Engineers
City of Brookline
2021-02-18

Department Legend

Back-of-House

#	Department	Name	Level	Area (sf)	Area (sm)
1	Public	Visitor Info / Front Desk / Ticket Sales	Level 1	163 SF	15.16 m ²
2	Back-of-House	Office	Level 1	211 SF	20.00 m ²
3	Back-of-House	Coat Check	Level 1	107 SF	9.92 m ²
4	Studios	Multi-Purpose Room	Level 1	525 SF	48.80 m ²
5	Studios	Studio - Painting / Printing	Level 1	959 SF	89.13 m ²
6	Studios	Studio - Enamelling / Stained Glass	Level 1	950 SF	89.11 m ²
7	Studios	Studio - Pottery	Level 1	959 SF	89.10 m ²
8	Studios	Studio - Weaving	Level 1	954 SF	88.90 m ²
9	Back-of-House	Custodian	Level 1	97 SF	9.09 m ²
10	Studios	WC - M	Level 1	55 SF	5.12 m ²
11	Studios	WC - F	Level 1	55 SF	5.12 m ²
12	Studios	WC - U	Level 1	111 SF	10.32 m ²
13	Public	Gift Shop / Cafe	Level 1	394 SF	36.50 m ²
14	Gallery	Gallery Storage	Level 1	238 SF	22.28 m ²
15	Public	Gallery	Level 1	1,547 SF	143.58 m ²
17	Museum	Museum Exhibit	Level 1	2,355 SF	212.29 m ²
18	Museum	Workshop / Archiving	Level 1	745 SF	69.21 m ²
19	Theatre	Theatre	Level 1	7,310 SF	679.17 m ²
20	Theatre	Work Room	Level 1	1,143 SF	106.15 m ²
21	Theatre	Storage / Loading	Level 1	778 SF	72.11 m ²
22	Theatre	Green Room / Group Dressing Room	Level 1	314 SF	29.21 m ²
23	Theatre	Dressing Room (2 person)	Level 1	176 SF	16.38 m ²
24	Theatre	Dressing Room (2 person)	Level 1	203 SF	18.90 m ²
25	Back-of-House	WC - Unisex	Level 1	54 SF	5.07 m ²
26	Back-of-House	WC - Unisex	Level 1	56 SF	5.24 m ²
27	Back-of-House	WC - Unisex	Level 1	56 SF	5.24 m ²
28	Back-of-House	Custodian	Level 1	107 SF	10.00 m ²
29	Public	WC - M	Level 1	212 SF	19.66 m ²
30	Public	WC - Universal	Level 1	108 SF	10.05 m ²
31	Public	WC - F	Level 1	528 SF	49.01 m ²
32	Circulation	Circulation	Level 1	165 SF	15.38 m ²
33	Circulation	Circulation	Level 1	3,881 SF	360.52 m ²
34	Back-of-House	Control Room Access	Level 1	134 SF	12.42 m ²
35	Back-of-House	Control Room	Level 2	1,157 SF	107.48 m ²
36	Back-of-House	Control Room	Level 1	157 SF	14.62 m ²
37	Studios	Storage	Level 1	26,971 SF	2,500.99 m ²

NOTE: Areas in this schedule are measured to centerline of wall



1 Second Floor Plan
1 : 150

OPTION 2a - Second Floor Plan



BrookMcIlroy/
Architects and Planners
City of Bristol, VA
2021-10-18

