



STAFF REPORT

REPORT OF THE CHAIR OF THE ARTS & CULTURE HUB STEERING COMMITTEE

OBJECTIVE

To provide the relevant committees with a mock-up design for alternative space usage within the new Arts and Culture Centre for their consideration to initiate discussion.

RECOMMENDATION

THAT the report of the Arts and Culture Hub Steering Committee Chair dated May 4, 2021, be received.

Respectfully Submitted

Approved

Sandy Finamore
Arts & Culture Hub Steering Committee Chair



Darla Hennessey
Manager of Recreation and Culture

BACKGROUND

At the April 26, 2021, Council meeting, the following resolution concerning the design options of the new Arts and Culture Centre was passed:

Moved by: S. Finamore

Seconded by: T. Turner

THAT Council approve design option 2A to proceed with further design and feasibility study.

AND THAT council direct staff and consultants to pursue net zero building options for the new facility.

This resolution approved of Design Option 2a as seen in Figure 1. In this design option, the Museum is designated 2,285 SF of exhibition space and 745 SF for storage, for a combined total space of 3,030 SF.

ANALYSIS

The space currently designated to the Museum in Design Option 2a is not enough appropriate to store the entirety of the its collection and provide suitable exhibition space. To mitigate this space issue, we would like to propose a reallocation of the internal space, as seen in Figure 2.

The space designated to the Museum for exhibition in the Lester B. Pearson Civic Centre was 3,787 SF, with the exact specification for storage unknown as this was spread throughout the building. As seen in the new configuration of space, the Museum exhibition space still falls short of the previous space yet meets it more closely, giving the requisite room for permanent, circulating, and travelling exhibitions. The added storage space will provide room to house all of the City's artefacts and art collection properly in one secure area, providing also the space for further accessioning and condition reporting.

In this reallocation, the Gift Shop/Café is removed, the Gallery and Storage falls from 1,755 SF to approximately 960 SF, and one of the Studio spaces is lost.

FINANCIAL IMPACT

This reallocation of space will have no impact on the Total Construction Cost of the new Arts and Culture Centre.

LINKS TO STRATEGIC PLAN

This project aligns with the City's Strategic Plan through:

- Support the Arts and Culture Community
 - Strategic, vibrant, relevant museum for the future.



SUMMARY

This new plan for internal space reallocation of the new Arts and Culture Centre for the community of Elliot Lake provides adequate space for the Museum and Museum Storage without infringing too much upon the spaces designated for the Arts groups.



Figure 1:

Appendix Page No. 184

DESIGN OPTION 2a

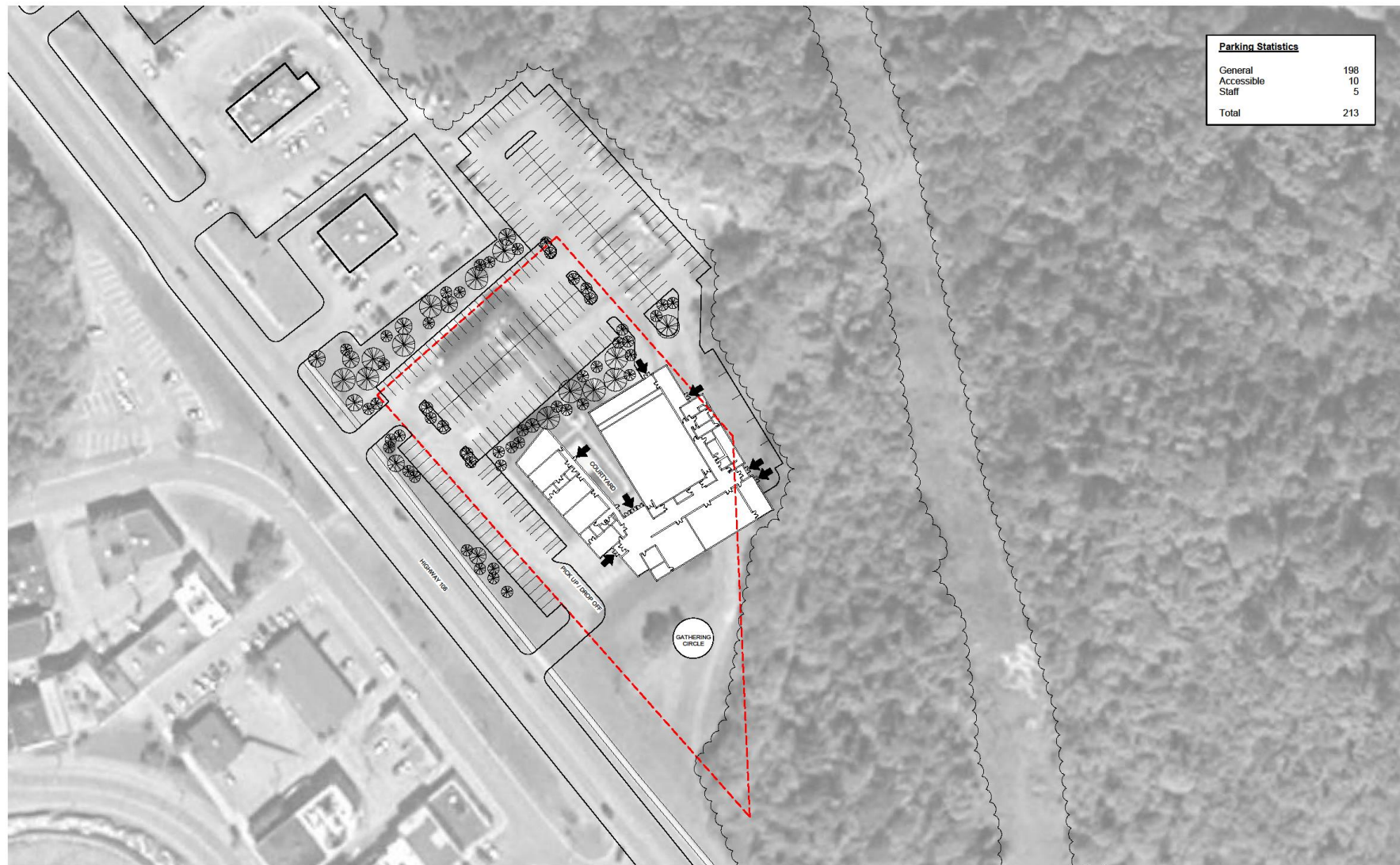
*Theatre without mezzanine seating
Studios located at grade
Centralized entry services*

A New **ARTS AND CULTURE HUB** for the
City of Elliot Lake

April 23, 2021

BrookMcIlroy/





1 Site Plan
1 : 500

OPTION 2a - Site Plan



BrookMcIlroy
Arts and Culture Hub 25-046
 City of Grand Lake
 2021-02-18

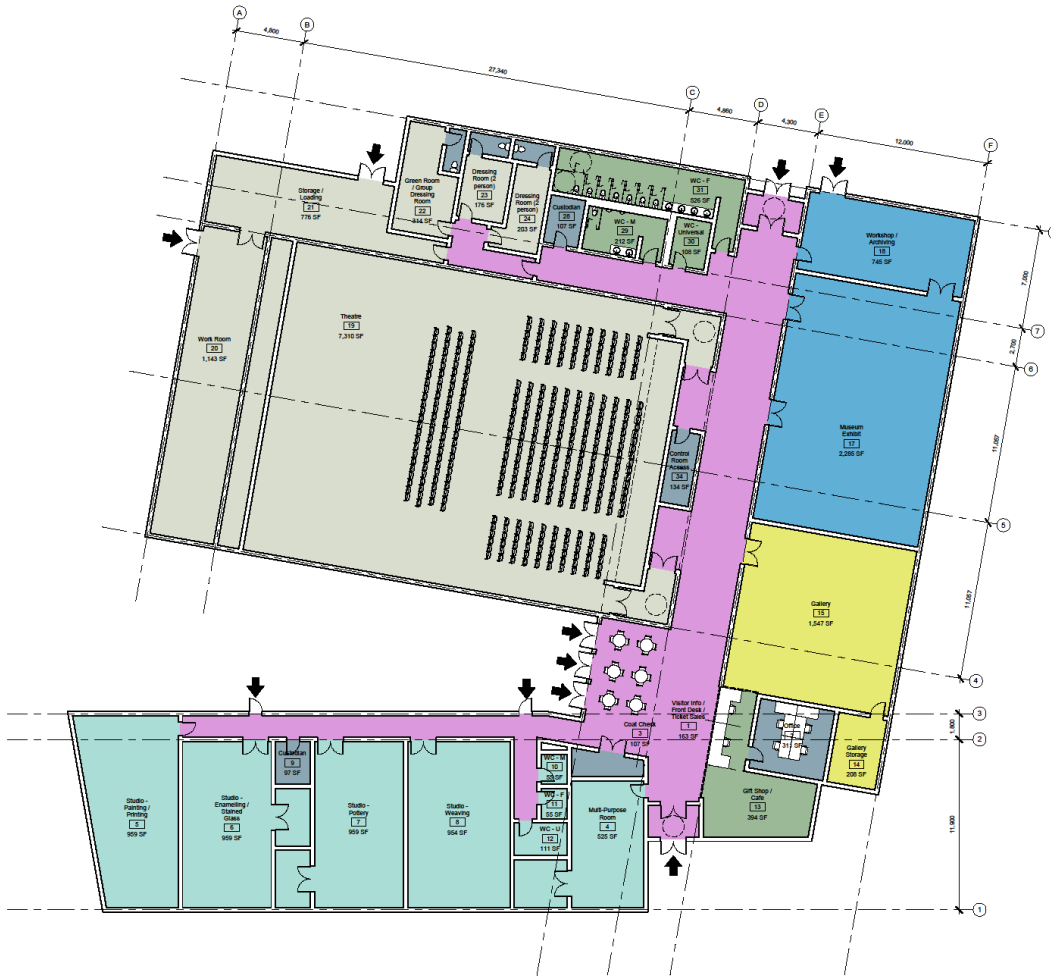


Department Legend

- Public
- Theatre
- Gallery
- Museum
- Studios
- Circulation
- Back-of-House

#	Department	Name	Level	Area (sf)	Area (sm)
1	Public	Visitor Info / Front Desk / Ticket Sales	Level 1	163 SF	15.16 m²
2	Back-of-House	Office	Level 1	311 SF	28.93 m²
3	Back-of-House	Court Check	Level 1	107 SF	9.92 m²
4	Studios	Multi-Purpose Room	Level 1	525 SF	48.80 m²
5	Studios	Studio - Painting / Printing	Level 1	950 SF	86.13 m²
6	Studios	Studio - Enamelling / Stained Glass	Level 1	950 SF	86.11 m²
7	Studios	Studio - Pottery	Level 1	950 SF	86.10 m²
8	Studios	Studio - Weaving	Level 1	954 SF	88.00 m²
9	Back-of-House	Custodian	Level 1	67 SF	6.09 m²
10	Studios	WC - M	Level 1	85 SF	7.82 m²
11	Studios	WC - F	Level 1	59 SF	5.42 m²
12	Studios	WC - U	Level 1	111 SF	10.32 m²
13	Public	Gift Shop / Cafe	Level 1	304 SF	28.00 m²
14	Gallery	Gallery Storage	Level 1	208 SF	19.26 m²
15	Gallery	Gallery	Level 1	1,547 SF	143.88 m²
17	Museum	Museum Exhibit	Level 1	2,286 SF	212.28 m²
18	Museum	Workshop / Archiving	Level 1	745 SF	68.21 m²
19	Theatre	Theatre	Level 1	7,310 SF	676.17 m²
20	Theatre	Work Room	Level 1	1,143 SF	105.15 m²
21	Theatre	Storage / Loading	Level 1	776 SF	72.11 m²
22	Theatre	Green Room / Group Dressing Room	Level 1	314 SF	29.21 m²
23	Theatre	Dressing Room (2 person)	Level 1	176 SF	16.36 m²
24	Theatre	Dressing Room (2 person)	Level 1	203 SF	18.90 m²
25	Back-of-House	WC - Unisex	Level 1	54 SF	4.97 m²
26	Back-of-House	WC - Unisex	Level 1	59 SF	5.24 m²
27	Back-of-House	WC - Unisex	Level 1	56 SF	5.24 m²
28	Back-of-House	Custodian	Level 1	107 SF	9.95 m²
29	Public	WC - M	Level 1	212 SF	19.66 m²
30	Public	WC - Universal	Level 1	108 SF	10.05 m²
31	Public	WC - F	Level 1	526 SF	48.91 m²
32	Circulation	Circulation	Level 1	165 SF	15.36 m²
33	Circulation	Circulation	Level 1	3,881 SF	356.52 m²
34	Back-of-House	Control Room Access	Level 1	134 SF	12.42 m²
35	Back-of-House	Control Room	Level 2	1,157 SF	107.48 m²
36	Studios	Storage	Level 1	157 SF	14.62 m²
				26,671 SF	2,505.06 m²

NOTE: Areas in this schedule are measured to perimeter of wall



1 First Floor Plan
1:150

OPTION 2a - First Floor Plan



BrookMcIlroy/
Arch and Culture Inc. 20-048
City of Chilliwack
2021-02-18

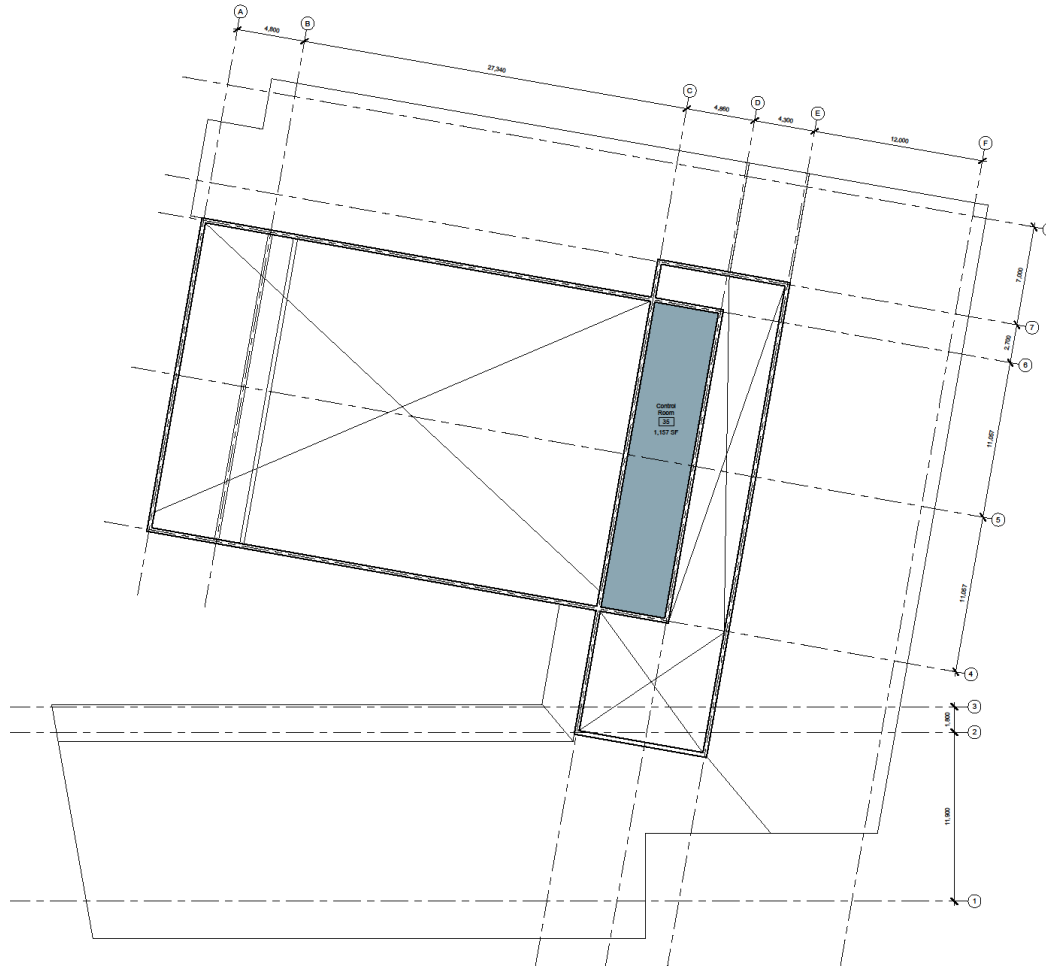


Department Legend

Back-of-House

#	Department	Name	Level	Area (sf)	Area (sm)
1	Public	Visitor Info / Front Desk / Ticket Sales	Level 1	163 SF	15.16 m²
2	Back-of-House	Office	Level 1	211 SF	20.00 m²
3	Back-of-House	Coat Check	Level 1	107 SF	9.92 m²
4	Studios	Multi-Purpose Room	Level 1	525 SF	48.80 m²
5	Studios	Studio - Painting / Printing	Level 1	959 SF	88.13 m²
6	Studios	Studio - Enamelling / Stained Glass	Level 1	950 SF	88.11 m²
7	Studios	Studio - Pottery	Level 1	959 SF	88.10 m²
8	Studios	Studio - Weaving	Level 1	954 SF	88.00 m²
9	Back-of-House	Custodian	Level 1	97 SF	9.09 m²
10	Studios	WC - M	Level 1	55 SF	5.12 m²
11	Studios	WC - F	Level 1	55 SF	5.12 m²
12	Studios	WC - U	Level 1	111 SF	10.32 m²
13	Public	Gift Shop / Cafe	Level 1	394 SF	36.50 m²
14	Gallery	Gallery Storage	Level 1	238 SF	22.08 m²
15	Public	Gallery	Level 1	1,547 SF	143.58 m²
17	Museum	Museum Exhibit	Level 1	2,355 SF	219.29 m²
18	Museum	Workshop / Archiving	Level 1	745 SF	69.21 m²
19	Theatre	Theatre	Level 1	7,310 SF	678.17 m²
20	Theatre	Work Room	Level 1	1,143 SF	106.15 m²
21	Theatre	Storage / Loading	Level 1	778 SF	72.11 m²
22	Theatre	Green Room / Group Dressing Room	Level 1	314 SF	29.21 m²
23	Theatre	Dressing Room (2 person)	Level 1	176 SF	16.38 m²
24	Theatre	Dressing Room (2 person)	Level 1	203 SF	18.90 m²
25	Back-of-House	WC - Unisex	Level 1	54 SF	5.07 m²
26	Back-of-House	WC - Unisex	Level 1	56 SF	5.24 m²
27	Back-of-House	WC - Unisex	Level 1	56 SF	5.24 m²
28	Back-of-House	Custodian	Level 1	107 SF	9.99 m²
29	Public	WC - M	Level 1	212 SF	19.66 m²
30	Public	WC - Universal	Level 1	108 SF	10.05 m²
31	Public	WC - F	Level 1	528 SF	49.01 m²
32	Circulation	Circulation	Level 1	165 SF	15.38 m²
33	Circulation	Circulation	Level 1	3,881 SF	358.52 m²
34	Back-of-House	Control Room Access	Level 1	134 SF	12.42 m²
35	Back-of-House	Control Room	Level 2	1,157 SF	107.48 m²
36	Back-of-House	Control Room	Level 1	157 SF	14.62 m²
37	Studios	Storage	Level 1	26,971 SF	2,500.99 m²

NOTE: Areas in this schedule are measured to centerline of wall



1 Second Floor Plan
1 : 150

OPTION 2a - Second Floor Plan



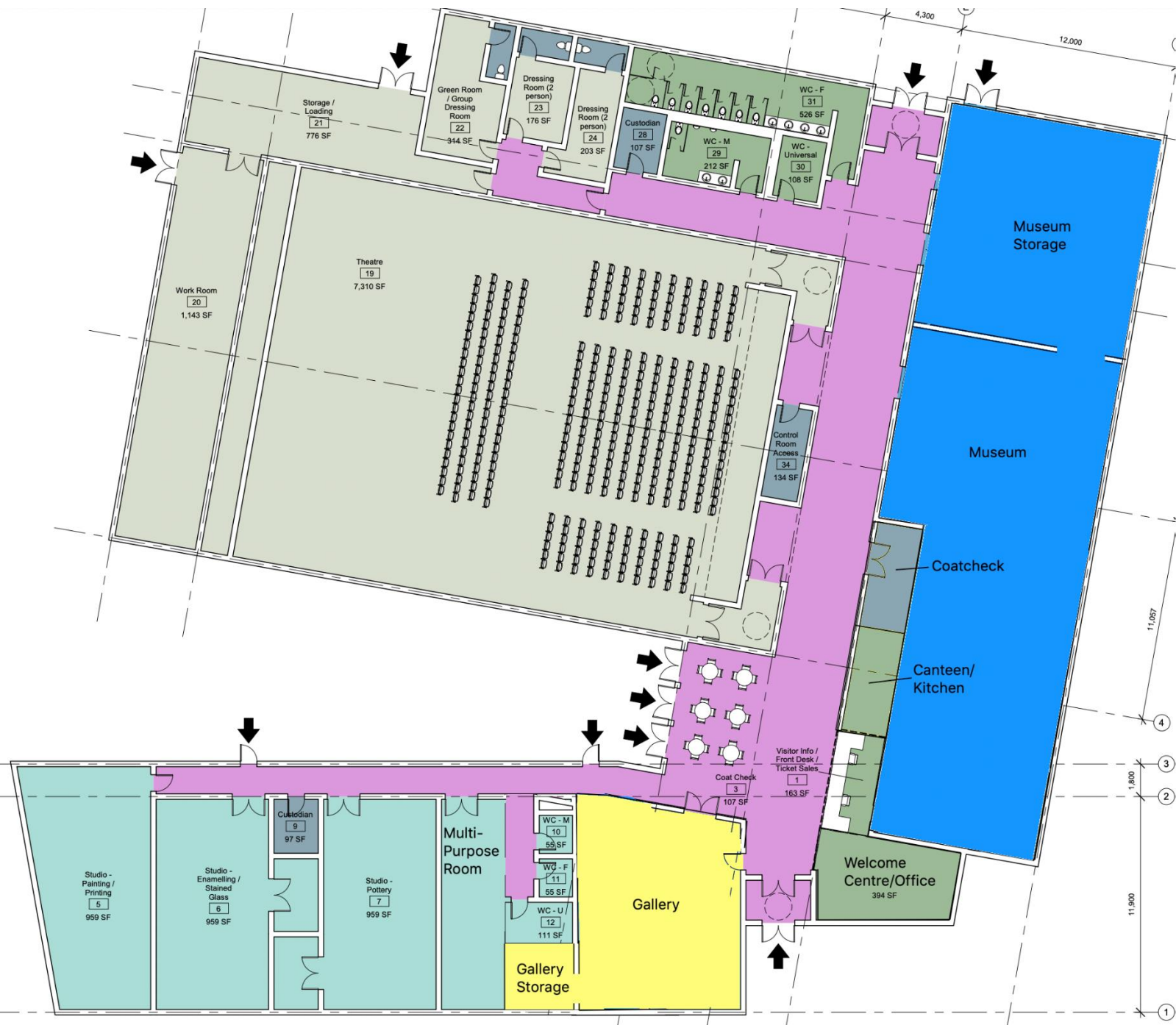
BrookMcIlroy/
Architects and Engineers
City of Erie, PA
2021-02-18



Figure 2:

**MOCK-UP NOT ASSOCIATED WITH BROOKMcILROY
CHANGES MADE BY SANDY FINAMORE**

ARTS AND CULTURE CENTRE SPACE REALLOCATION PROPOSAL



Welcome Centre/Office	394 SF
Museum	~3030 SF
Museum Storage/Office	~1755 SF
Gallery/Gallery Storage	~960 SF

